

Belmont High School Phasing

School Committee Presentation

May 7, 2019

Belmont High School Phasing Topics:

What will it look like on the BHS campus during:

- **June 2019**
- **Summer 2019**
- **Phase One: School Year 2019/20, 2020/21**
- **Phase Two: School Year 2021/22, 2022/23**
- **Construction Timeline**

Belmont High School Phasing

- **What should I know as a student, teacher, staff person, parent, guardian, and community member during this process?**

BHS June 2019 Phasing FAQ's

- If the work will begin on the BHS site starting June 10, 2019 does it interfere with school?
 - ✓ *This will not interfere with the end of school year academics, events or athletics.*
- When does construction start in full?
 - ✓ *June 18, 2019 – the day after school ends.*

BHS Summer 2019 Phasing FAQ's

- What will the campus look like over the summer?
 - ✓ *For all intents and purposes it will be a construction site and closed to the public. It will be fenced off – including the parking lot side by the auditorium.*
- Who can access the school or the site in the summer?
 - ✓ *Only designated Town of Belmont and Belmont Public School staff will be allowed on site. Those staff will be administration, administrative office staff, custodians and technology staff.*

BHS Summer 2019 Phasing FAQ's

- How will the public, students and parents access the high school or high school staff during the summer?
 - ✓ *The high school will post “summer hours” for the public that will be housed at the Chenery Middle School. This will allow the public to meet with the BHS staff.*
 - ✓ *These hours will be communicated by the BHS administration before school lets out for the summer.*

BELMONT HIGH SCHOOL SUMMER 2019 PHASING PLAN

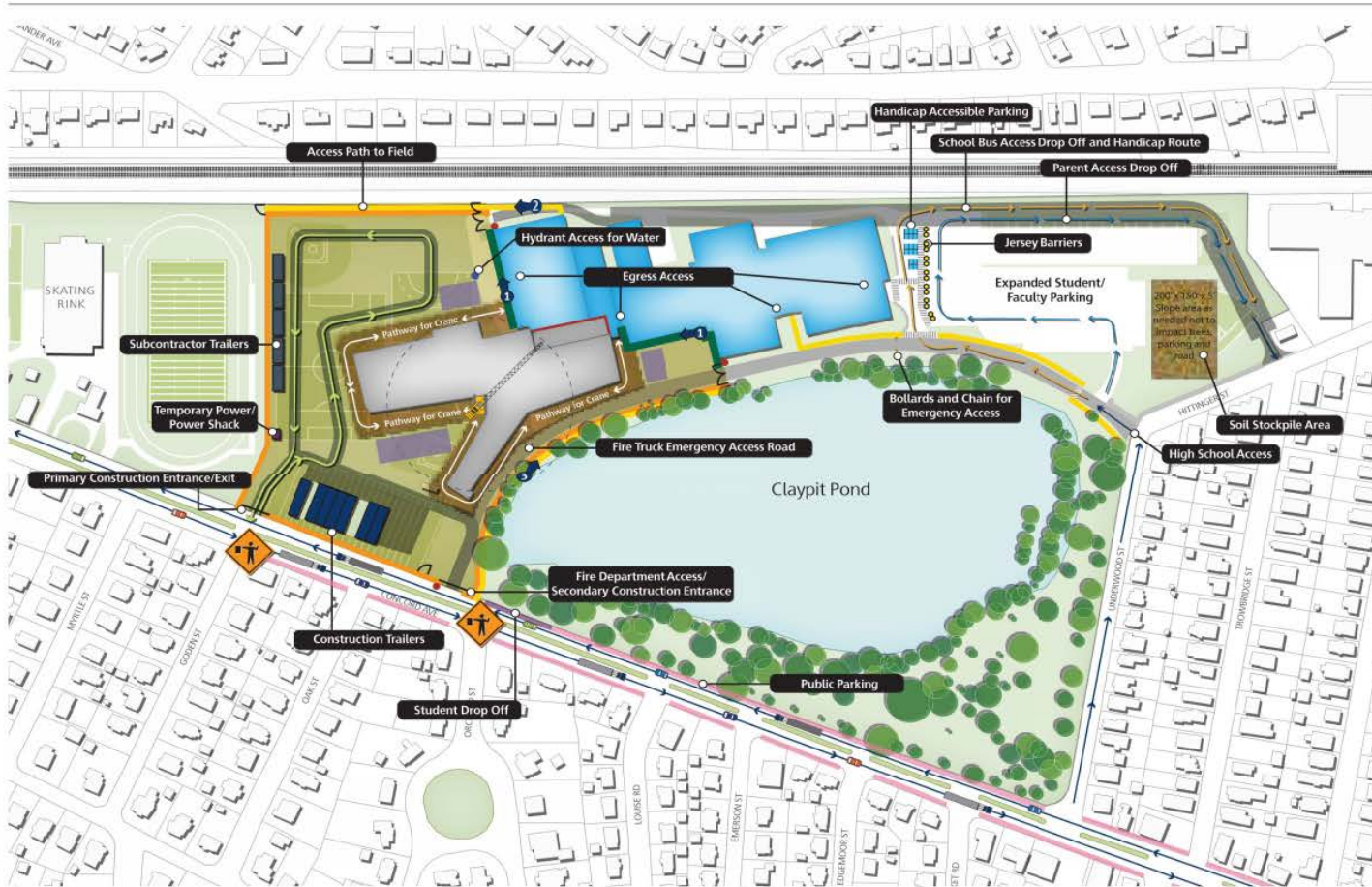


BHS School Year 2019/20 Phasing FAQ's

- What will the traffic pattern look like for parents and staff?
 - ✓ *Drivers to school will enter the campus in the same manner they do now and will access a new driveway loop taking you out to Hittinger Street.*
- What about walkers and bikers? Can I drop off on Concord Ave?
 - ✓ *Yes – there will be a new sidewalk on Underwood and a pedestrian / biking pathway along the pond at the intersection of Orchard and Concord.*

BHS School Year 2019/20 Phasing FAQ's

- Will there be enough parking for staff, students and visitors?
 - ✓ *Yes – there will be the same amount of parking as there is right now on campus.*
- Wait – does this mean the road along the pond that exits at Concord Ave is not open for vehicle use?
 - ✓ *Yes – please see the map on the next slide.*



Phase 1
High School Construction

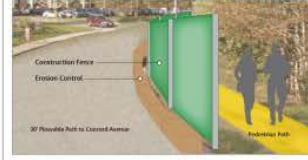
Detail 1



Detail 2



Detail 3



Construction Legend

- Construction fence
- Construction 30' rolling gate
- Construction double swing gate
- Construction Man Gate
- Knox Box
- Traffic control police flagman
- Egress
- Egress path
- Egress path with overhead protection
- Temporary wall w/ weather protection
- School occupied space
- Construction Laydown Area

Belmont High School
Belmont, MA

June 2019 - August 2021

Logistic Plans

Scale: NTS



BHS School Year 2019/20 Phasing FAQ's

- Given the loss of playing fields how will this project impact our athletics program?
 - ✓ *Our Athletic Director Jim Davis has met with coaches, members of the Belmont Parks Department and will have a practice schedule in place for all fall and spring sports. We would like to thank the Belmont DPW and Recreation Department for their support.*
- Do you have space for our Park and Recreation programs to run if they cannot use BHS?
 - ✓ *Yes – we have met many times and have provided alternative space for our partners in the Recreation Department.*

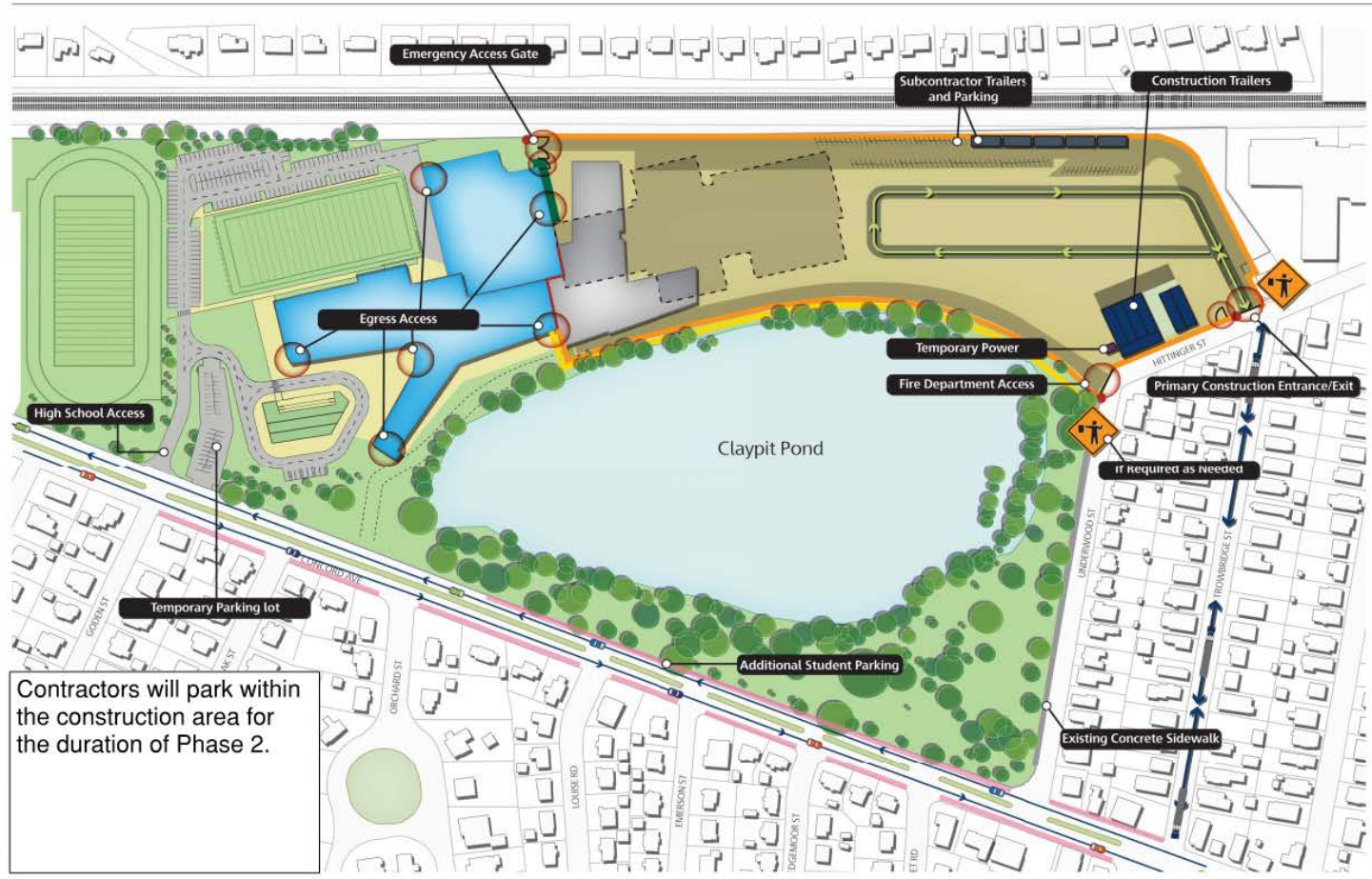
BHS School Year 2019/20 Phasing FAQ's

- Will all of the construction area be fenced off and separate from the school side?
 - ✓ *Yes – the construction site and school campus will be clearly separated by a fence.*
- Will all of the construction employees be CORI'd?
 - ✓ *Yes – all workers who work on the site will be CORI'd and “badged”. The Belmont Public School Department staff and administration will review the CORI report of every construction employee.*

Looking Ahead:

BHS School Year 2021/22 Phasing FAQ's

- **What will the BHS campus site look like when Phase One is complete and the 9-12 students move in?**
 - ✓ *It is two years away however please see the next slide with a map for detail.*



**Phase 2
Middle School Construction**

Contractors will park within the construction area for the duration of Phase 2.

Construction Legend

- Construction fence
- Construction 30' rolling gate
- Construction double swing gate
- Construction man gate
- Knox Box
- Traffic control police flagman
- Egress Path
- Temporary wall w/ weather protection
- School occupied space

Belmont High School
Belmont, MA

June 2021 - March 2023

Logistic Plans

Scale: NTS



BHSBC Construction Timeline

- **2018/19 School Year -**
 - Design Detailed Plans
- **Summer 2019 –**
 - Break ground on BHS site
 - Start Construction on Phase One (9-12 portion of building)
- **Summer 2021 –**
 - Students in grades 9-12 move into new school
 - Start construction on Phase Two (Grades 7/8)
- **Summer 2023 –**
 - Students in grades 7 & 8 move into completed school
 - Construction complete for new 7-12 school

Belmont Middle and High School



BHSBC - THANK YOU

As we enter the next stage of this process I would like to thank:

- Our faculty and staff for their hard work, patience and support
- Our students and families for patience and support
- Our community for providing this amazing opportunity
- Our elected officials – especially our School Committee members
- The Chair and Vice Chair of the BHSBC: Bill Lovallo and Pat Bruschi