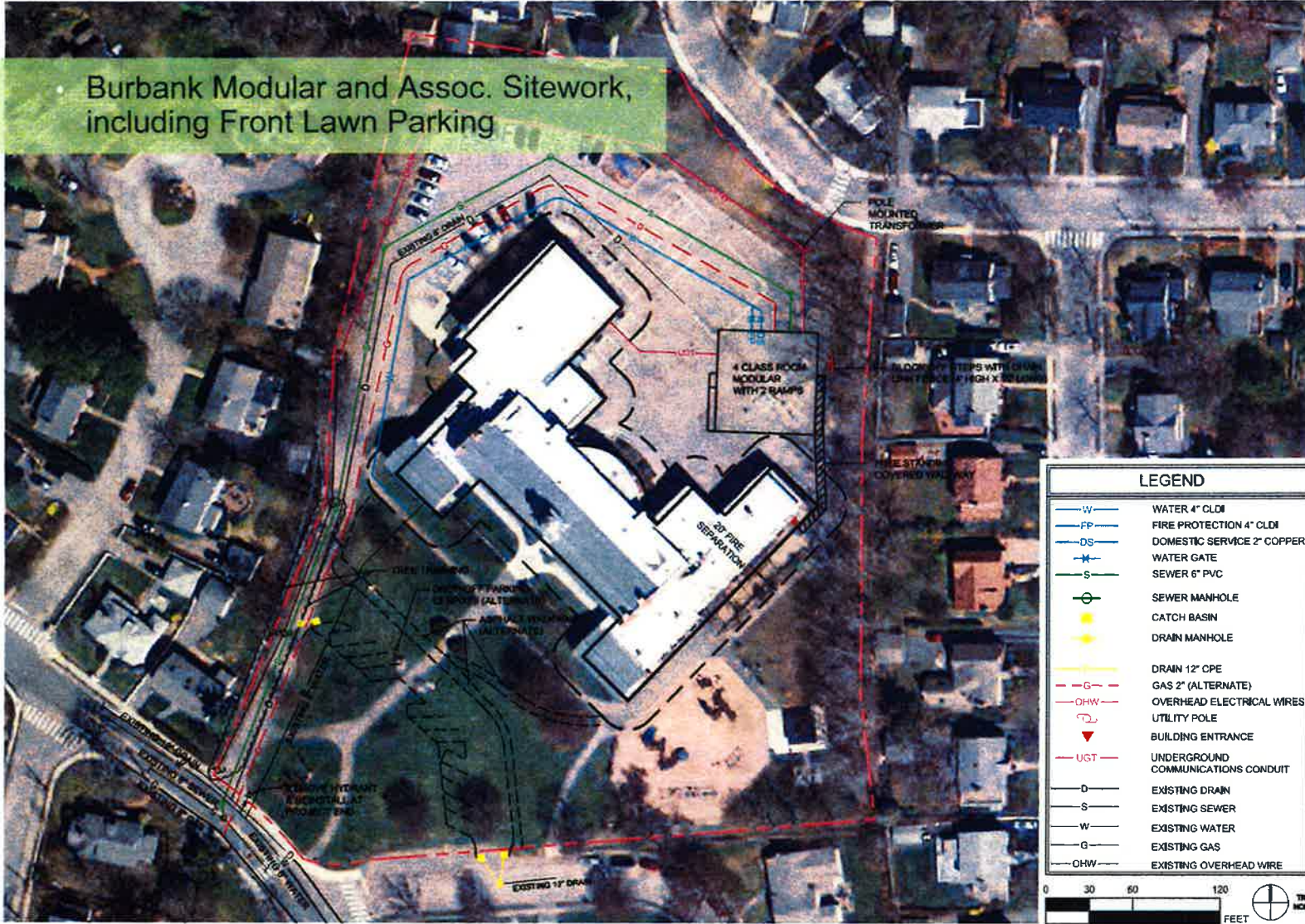


SMMA

Belmont Elementary Schools Modular Building Study

School Committee Presentation
06.20.2017

Burbank Modular and Assoc. Sitework, including Front Lawn Parking



LEGEND	
—W—	WATER 4" CLDI
—FP—	FIRE PROTECTION 4" CLDI
—DS—	DOMESTIC SERVICE 2" COPPER
—X—	WATER GATE
—S—	SEWER 6" PVC
⊙	SEWER MANHOLE
●	CATCH BASIN
●	DRAIN MANHOLE
—D—	DRAIN 12" CPE
—G—	GAS 2" (ALTERNATE)
—OHW—	OVERHEAD ELECTRICAL WIRES
⊕	UTILITY POLE
▼	BUILDING ENTRANCE
—UGT—	UNDERGROUND COMMUNICATIONS CONDUIT
—D—	EXISTING DRAIN
—S—	EXISTING SEWER
—W—	EXISTING WATER
—G—	EXISTING GAS
—OHW—	EXISTING OVERHEAD WIRE



SMMA
91 NEWBURY STREET, SUITE 200, BOSTON, MA 02116
 TEL: 617.552.8200
 FAX: 617.552.8201
 WWW.SMMA.COM

BURBANK ELEMENTARY SCHOOL

95 Washington Street
 Belmont, MA

DATE: 06/13/2017
 ISSUE: 1
 SCALE: 1"=60'
 REF: SEB
 DR BY: SEB
 CK BY: BCP

JOB NO.: 16015.02

FIG. 2
 MODULAR CLASSROOM

Burbank ES Cost Summary

Modular Building and Associated Sitework

Buy	\$ 1,483,201
Lease	\$ 1,118,401 (3-years)

Parking and Site Improvements

Option 1	\$ 348,308 (New Front Lawn Parking Lot)
Option 2	\$ 692,459 (Tandem Parking and Play Area Improvements)

Butler Modular and Assoc. Sitework, including Expanded Parking



LEGEND	
FP	FIRE PROTECTION 4" CLOI
DS	DOMESTIC SERVICE 2" COPPER
W	WATER GATE
S	SEWER 6" PVC
G	GAS 2" (ALTERNATE)
⊙	SEWER MANHOLE
■	CATCH BASIN
—	DRAIN 12" CPE
▼	BUILDING ENTRANCE
UGE	UNDERGROUND ELECTRIC DUCTBANK
UGT	UNDERGROUND COMMUNICATIONS CONDUIT
D	EXISTING DRAIN
S	EXISTING SEWER
W	EXISTING WATER
G	EXISTING GAS



FIG. 01

DATE: 06/19/2017

ISSUE:

SCALE: 1"=60'

REF:

DR BY: SEB

CK BY: BCP

SMMA

BUTLER ELEMENTARY SCHOOL

95 Washington Street
 Belmont, MA
 JOB NO.: 16015.02

SYMBOLS: MANUAL & MOBILE ACCESS ONLY
 1000 Washington Street
 Cambridge, MA 02142
 PHONE: 617.552.8800

Butler ES Cost Summary

Modular Building and Associated Sitework

Buy	\$ 1,458,649
Lease	\$ 1,093,849 (3-years)

Parking and Site Improvements

Option 1	\$ 144,397 (Expanded Parking)
Option 2A	\$ 171,679 (Two Play Areas Sod Turf)*
Option 2B	\$ 276,195 (One Play Area Synth. Turf and One Sod Turf)*

*includes \$50,000 allowance for playground equip. repair