



Return to In-Person Learning Working Group

Week 8 Meeting | April 12, 2021



Agenda

- Updated Health Metrics
- K-4 Return to Full In-Person Updates
- Middle School Progress & Implementation Updates
- High School Progress & Implementation Updates
- Looking Back
- After Action Review: What Can We Learn from this Process?
- Looking Ahead



Prevention Strategies by Level of Community Transmission

Low Transmission ¹ Blue	Moderate Transmission Yellow	Substantial Transmission Orange	High Transmission Red
<p>Elementary Schools Physical distancing: at least 3 feet between students in classrooms</p>	<p>Elementary Schools Physical distancing: at least 3 feet of distance between students in classrooms</p> <p>Cohorting² recommended when possible</p>		
<p>Middle and High Schools Physical distancing: at least 3 feet between students in classrooms</p>	<p>Middle and High Schools Physical distancing: at least 3 feet of distance between students in classrooms</p> <p>Cohorting recommended when possible</p>	<p>Middle and High Schools Schools that can use cohorting: at least 3 feet of distance</p> <p>Schools that cannot use cohorting: at least 6 feet distance between students in classrooms ²</p>	
<p>Sports and extracurricular activities Sports and extracurricular activities occur with at least 6 feet of physical distance to the greatest extent possible⁵</p>	<p>Sports and extracurricular activities Sports and extracurricular activities occur with at least 6 feet of physical distance required⁵</p>	<p>Sports and extracurricular activities Sports and extracurricular activities occur only if they can be held outdoors, with more than 6 feet of physical distancing⁶</p>	

Mitigation & Community Transmission

Levels of community transmission defined as:

- **total new cases** per 100,000 persons in the past 7 days (low, 0-9; moderate, 10-49; **substantial, 50-99**; high, ≥100), and
- **percentage of positive tests** in the past 7 days (**low, <5%**; moderate, 5-7.9%; substantial, 8-9.9%; high, ≥10%).

<p>Belmont's Level of Community Transmission (4/12/2021)</p>
<p>Total new cases: 58.59</p>
<p>Percentage of positive tests: 0.91% (14 day average)</p>

Sources: Center for Disease Control. (2021). [CDC's Operational Strategy for K-12 Schools through Phased Mitigation.](#)

Calculations determined by Belmont Board of Health. **Note:** CDC metrics are *different* than MA metrics/levels.



Level of Community Transmission Over Last Month

Level of Community Transmission Metrics Belmont, MA

Date	Total New Cases per 100,000 persons (last 7 days)	Percentage of Positive Tests (last 7 days)*	Belmont's Level of Community Transmission	CDC Recommendations re: Physical Distancing	CDC Recommendations re: Cohorting*	CDC Recommended Instructional Mode (Elementary)	CDC Recommended Instructional Mode (MS & HS)
4-12-2021	58.59	0.91%	Substantial	3+ between students	Cohorting recommended when possible		
4-5-2021	58.59	0.63%	Substantial	3+ between students	Cohorting recommended when possible		
3-29-2021	36.62	0.76%	Moderate	3+ between students	N/A		
3-22-2021	25.63	0.78%	Moderate	3+ between students	N/A		
3-19-2021	UPDATED CDC GUIDANCE RE: RECOMMENDATIONS						
3-15-2021	58.59	0.66%	Substantial	6'+ required		Hybrid mode	Hybrid mode
3-8-2021	32.96	0.82%	Moderate	6'+ to greatest extent possible		Full in-person instruction	Full in-person instruction
3-1-2021	40.28	0.98%	Moderate	6'+ to greatest extent possible		Full in-person instruction	Full in-person instruction
2-22-2021	47.6	1.43%	Moderate	6'+ to greatest extent possible		Full in-person instruction	Full in-person instruction
2-15-2021	65.92	1.85%	Substantial	6'+ required		Hybrid mode	Hybrid mode
2-8-2021	113.53	2.42%	High	6'+ required		Hybrid mode	Virtual only unless strict mitigation
2-1-2021	124.51	3.01%	High	6'+ required		Hybrid mode	Virtual only unless strict mitigation

* According to the CDC (2021a): "Cohorting involves creating groups of students that are separated from other groups by at least 6 feet throughout the entire day. Cohorting can be implemented in either full in-person instruction or hybrid instruction, or through other strategies."

Levels of community transmission defined as:

- **total new cases** per 100,000 persons in the past 7 days (low, 0-9; moderate, 10-49; substantial, 50-99; high, ≥ 100), and
- **percentage of positive tests** in the past 7 days (low, $< 5\%$; moderate, 5-7.9%; substantial, 8-9.9%; high, $\geq 10\%$).

Sources: Center for Disease Control. (2021). [CDC's Operational Strategy for K-12 Schools through Phased Mitigation.](#)

K-4 Full Return





Middle School Progress & Implementation Updates

- Grade 5:
 - Starting April 15: Dissolution of hybrid cohorts; in-person 7:45-12:05pm; remote 1:05-2:25)
 - Starting April 28: Full-day in-person learning with lunch
 - Full-day remote learning:
 - Remote-only classes for core classes & PE
 - Live-streaming for other ENCORE classes



Middle School Progress & Implementation Updates

- Grades 6-8:
 - Starting April 28: Full-day in-person learning with lunch
 - Full-day remote learning:
 - Live-streaming for CORE & most ENCORE classes
 - Remote-only classes for PE



Middle School Progress & Implementation Updates

- Communicating with staff, families, students
 - Grade 5 Parent Information Meeting (Apr. 12, 8am)
 - Grades 6-8 Parent Information Meeting (Apr. 12, 6:30pm)
 - Grade 5 Remote Families (Apr. 13, 8am)
 - Grades 6-8 Remote Families (Apr. 26, 6pm)
- Transitioning from hybrid to full return schedules & operations
- Operationalizing structures, processes, & materials



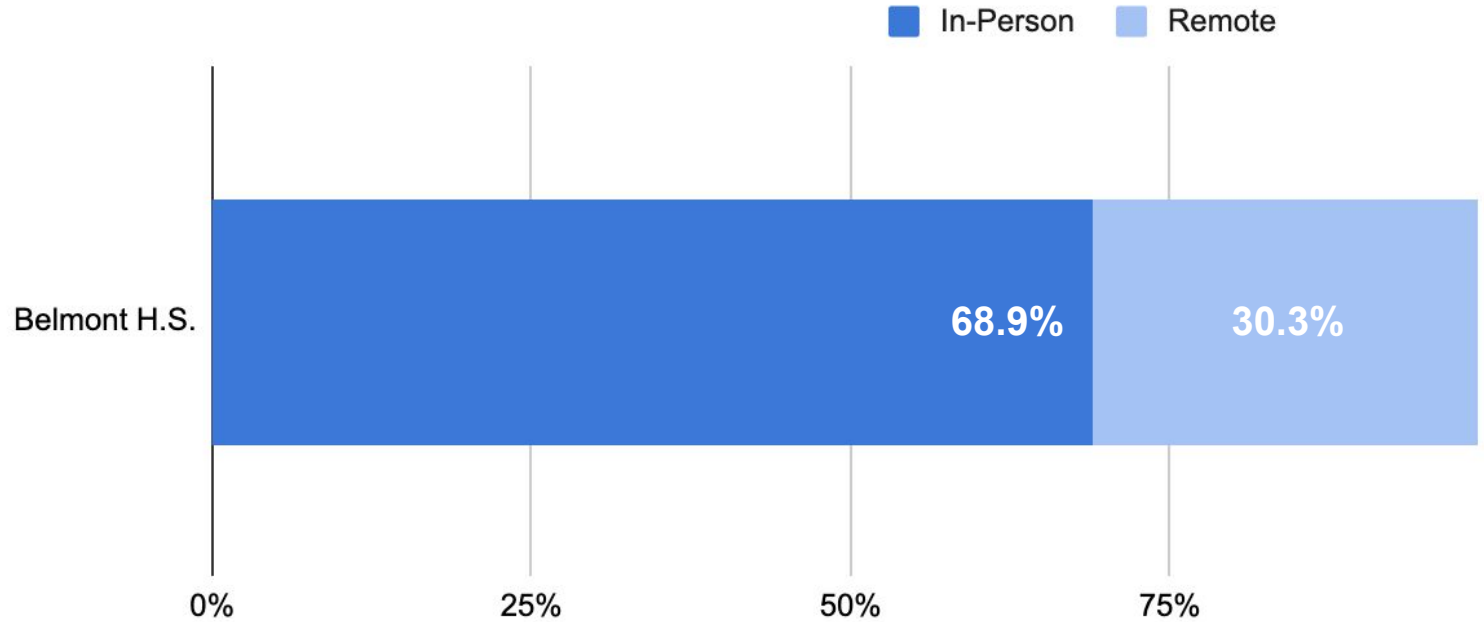
High School Progress & Implementation Updates

- Starting April 12: Dissolution of hybrid cohorts; in-person mornings; lunch, afternoons, and Wednesdays remote
- Starting April 29: Full-day in-person learning with lunch
- Full day remote learning via live-streaming
- Communicating with staff, families, students
 - BHS Family Information Meeting (Apr. 15, 7pm)
- Transitioning from hybrid to full return schedules & operations



9-12: Enrollment Data by Instructional Model

Spring 2021 Full Return Instructional Mode Selection (Gr. 9-12)





9-12: Enrollment Data by Instructional Model by Grade

Belmont H.S.	In-Person Students	Remote Students
All Students	69%	30%
Grade 9	74%	25%
Grade 10	63%	36%
Grade 11	69%	31%
Grade 12	69%	31%



9-12: Enrollment Data by Instructional Model for Subgroups

Belmont H.S.	In-Person Students	Remote Students
All Students	69%	30%
Students with an IEP	79%	19%
Students who are English Learners (<i>n</i> < 20)	75%	25%
Students in the METCO program (<i>n</i> < 30)	74%	26%



9-12: Enrollment Data by Instructional Model by Race/Ethnicity

(for race/ethnicity data where $n > 20$)

Categories determined by DESE and data self-reported by families

Belmont H.S.	In-Person Students	Remote Students
All Students	69%	30%
Asian	47%	53%
Black or African American	77%	19%
Hispanic or Latino: White	61%	39%
White	75%	25%
White and Asian	67%	31%



Return to In-Person Learning Working Group

Looking Back & Looking Ahead

Return to In-Person Learning Working Group: Charge

Frame the conditions for increased level of return to in-person learning by grade span

Analyze barriers or roadblocks to successful and safe return; problem solve these challenges in small groups

Draft sets of rolling recommendations that outline path to full-time in-person return to school and submit to superintendent for review

Purpose: Develop **tools** that support Belmont Public Schools in determining **when** and **how** to bring more students back to **in-person learning**.

Illustrative Example of Proposed Process

Sub-Group Focus	Current Barriers & Challenges	Opportunities & Potential Solutions	Recommendations
Social Distancing	<ul style="list-style-type: none">•••	<ul style="list-style-type: none">•••	<ul style="list-style-type: none">• If... then...• If... then...
Vaccination	<ul style="list-style-type: none">•••	<ul style="list-style-type: none">•••	<ul style="list-style-type: none">• If... then...• If... then...• If... then...



Subgroups will focus on different sets of conditions for in-person return.

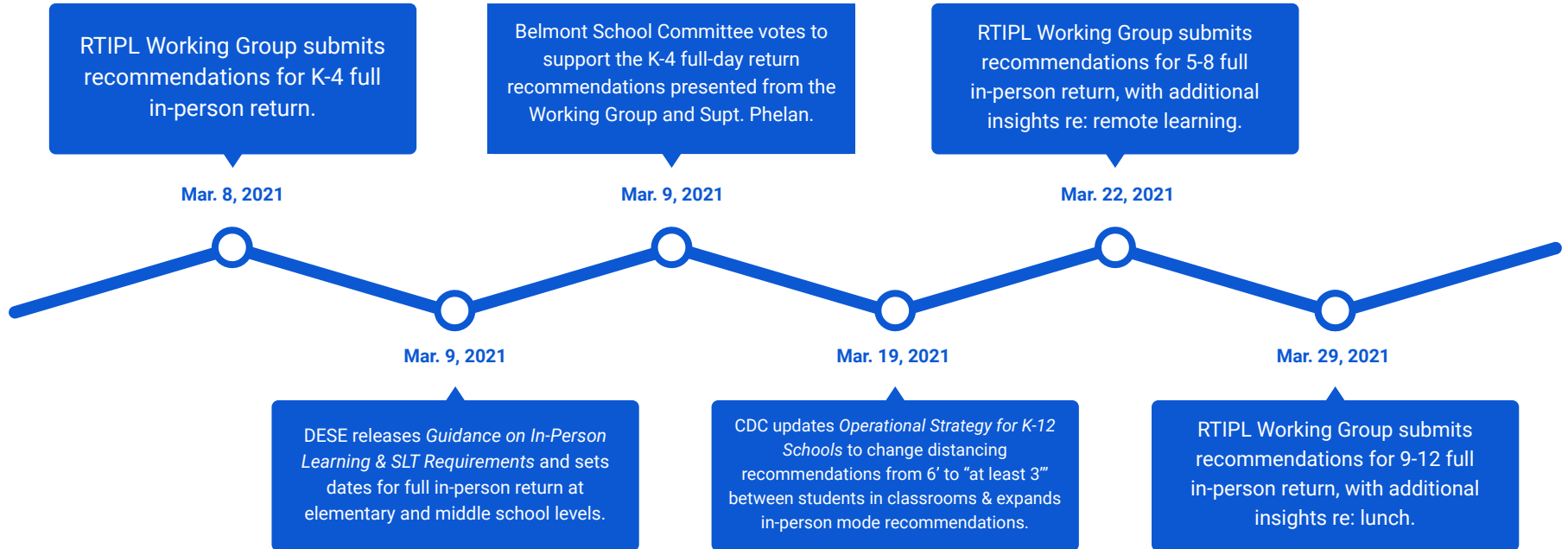


Looking Back





Looking Back





Looking Back

Belmont School Committee votes to support the HS full-day return recommendations presented from the Working Group and Supt. Phelan with a focus on prioritizing an April return.

Mar. 30, 2021

Conditions:

- Apr. 5: K-4 students full return
- Plans to return MS & HS Apr. 28/29
- Moderate/substantial level of community transmission
- 3'+ distancing required (per CDC)
- DESE eliminates hybrid as option across Pre-K-8
- Vaccine roll-out moving, especially for Pre-K-12 educators
- Spring weather provides more flexibility.

Today

Grades 9-12 return to full day in-person and remote learning across the district.

Apr. 29, 2021

Apr. 5, 2021

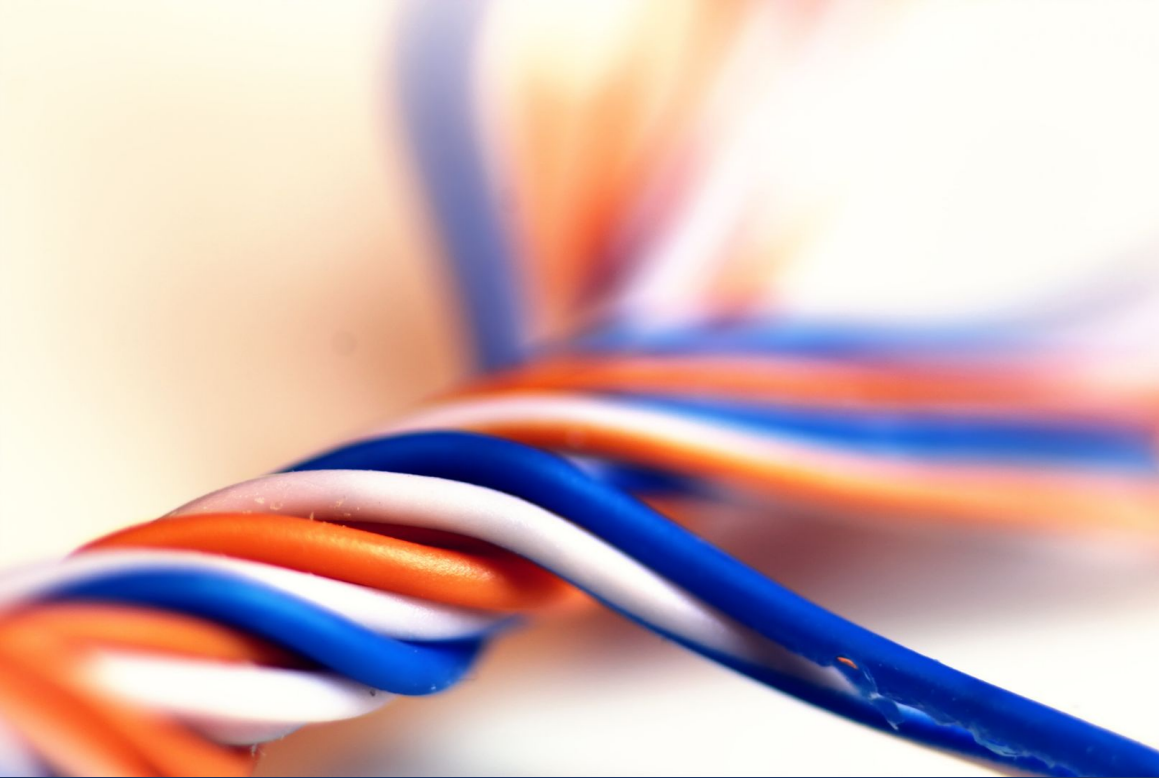
Grades K-4 return to full day in-person and remote learning across the district.

Apr. 28, 2021

Grades 5-8 return to full day in-person and remote learning across the district.



Moving RTIPL Forward: Stakeholders



Educators

Staff

Students

Administrators

School Committee

Parents & Guardians

RTIPL Working Group



After-Action Review: What Can We Learn from this Process?

When you think about our *product* (what we accomplished) and our *process* (how we accomplished it):

- What worked well? Why?
 - What should the district *sustain* from this process?
- What were some of the challenges? Why?
 - What should the district *improve upon* in similar, future processes? How?
- What unresolved work remains?

Please capture as much of the discussion as possible. **Bring back one key piece of learning to share (in < 1 minute).**



Looking Ahead

- It is possible that either this WG or another WG could be (re)convened in the future to discuss complex issues such as:
 - Seasonal strategy
 - Remote learning



Closing & Thank You

- What new learning are you taking *with you* from this process?