

Wellington's new home is fast becoming a reality!

It is on time for school to open THIS SEPT 2011!!

Construction Spotlight:

As anyone who has been by the site lately can see, the building is really starting to take shape. The exterior "Purple" sheathing and waterproof "black" barrier are nearly completed. We are well underway with putting the temporary "yellow" enclosures in the windows and the roof is now complete. The main focus at this point is to get the building weather tight... to "batten down the hatches"... so we can continue the interior work throughout the winter. The temporary heating system is now on in the classroom wings and so will kick off the bulk of the interior work.

On the interior of the building, mechanical, electrical and plumbing systems are well underway. The southwest wing (near St. Joe's church) is nearly completed with wall studs. And they are currently pulling wire for outlets and starting the interior drywall in the next few weeks.

On the exterior you will notice that the building has disappeared behind a fully covered staging. This covering provides a "tent" for the mason to put up the brick which started to go up last week. In a few weeks the first of the windows will be delivered to the site for installation.

On the interior we have started to work with a FFE (Fixtures, Furnishings and Equipment) consultant who will help us with the ordering of everything that will be needed to make this school complete. From classroom furnishings (desks, chairs etc.) to basketball hoops, bulletin boards, trash barrels and so on. There are many details that need to be looked at.



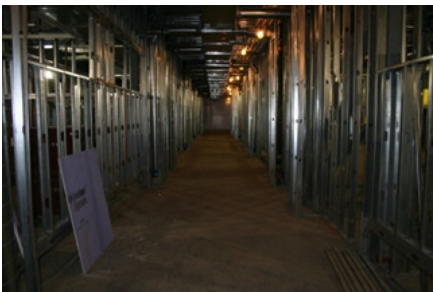
View from School St. of gym & Upper School



"tent" to allow for exterior brick to be set



Gym



Inside view of classroom hallway



Outside view of 2 floors of classrooms
(yellow plastic is temporary windows)



Inside view of typical classroom

Wellington teachers and staff signed beam:

The entire Wellington school staff was invited to sign the final steel beam at the start of the school year. This beam was then put in place during the Topping off Ceremony. In building construction, the topping off ceremony is held when the last beam is placed at the top of a building. An evergreen tree was placed upon the structure to symbolize growth and bring luck. The American flag was also raised atop the structure. The beam was signed on the ground before it was hoisted into place by a crane. The height of the ceremony took place when the piece of steel is lifted into place and secured. Below are pictures of the steel structure at the time of the beam signing and some pictures of the beam signing activity.

