

Wellington/BHS Information Meeting

BHS Auditorium

1/6/10

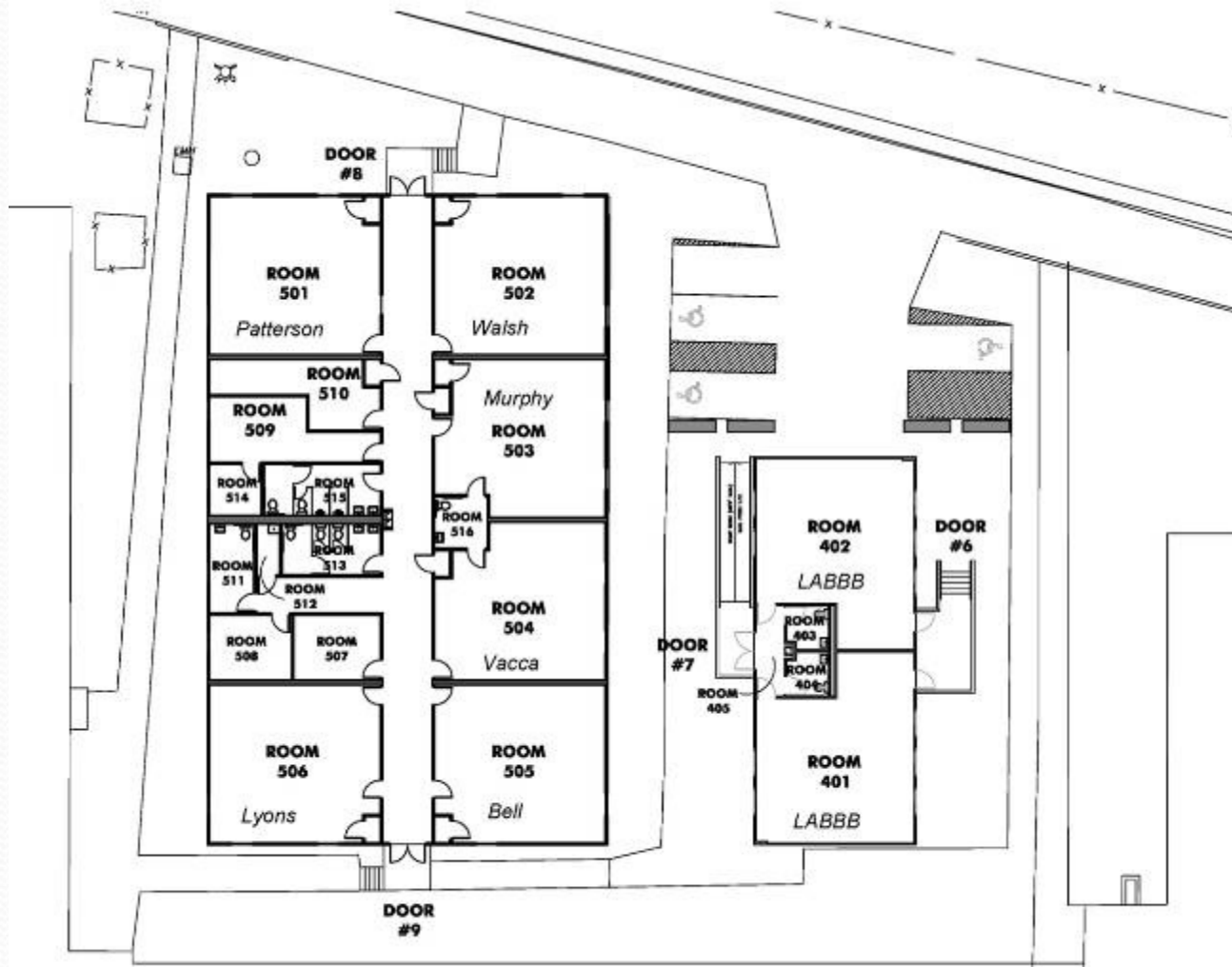
Important Dates

- Wellington students will report to modulars on BHS campus on Monday, February 22nd, 2010.
- January 15th and January 20th = Full school days.
- January 19th is a Professional Day for Staff. No students.
- February 12th and 22nd will be 11:30 dismissal.
- Bus fees are due to Business Office by 1/29. Fee is \$200.00. Routes TBD.

Modular Buildings

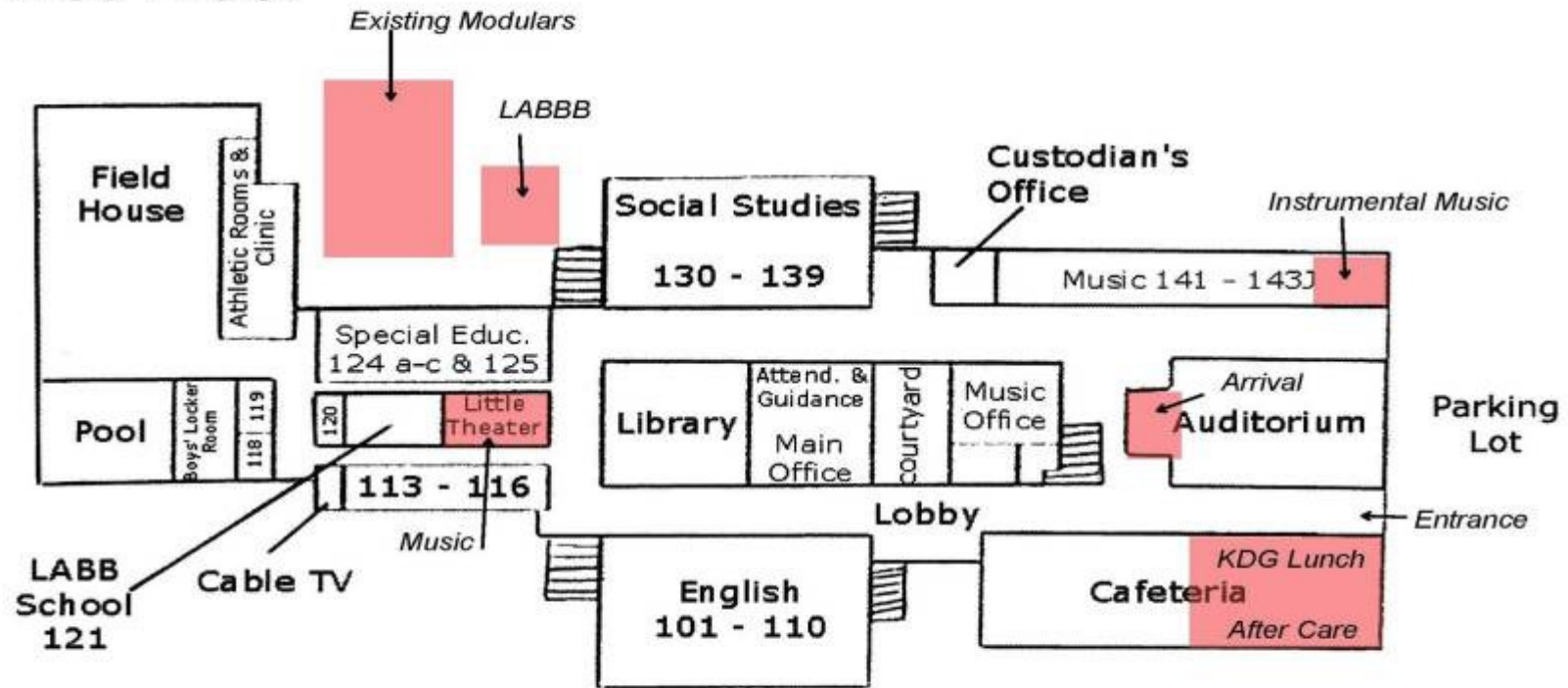


Existing Modular Building



Wellington Students at BHS

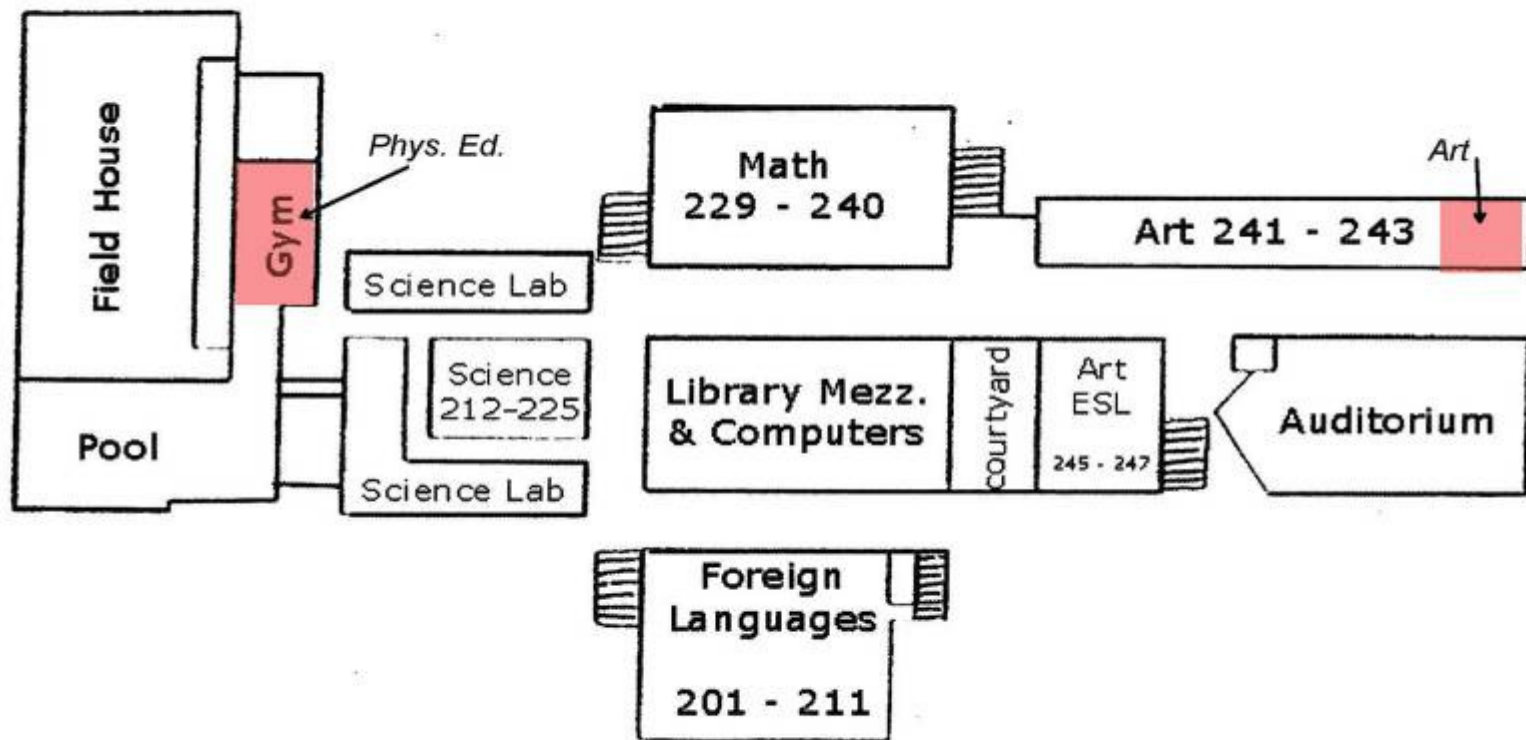
First Floor



Clay Pond

Wellington Students at BHS

Second Floor



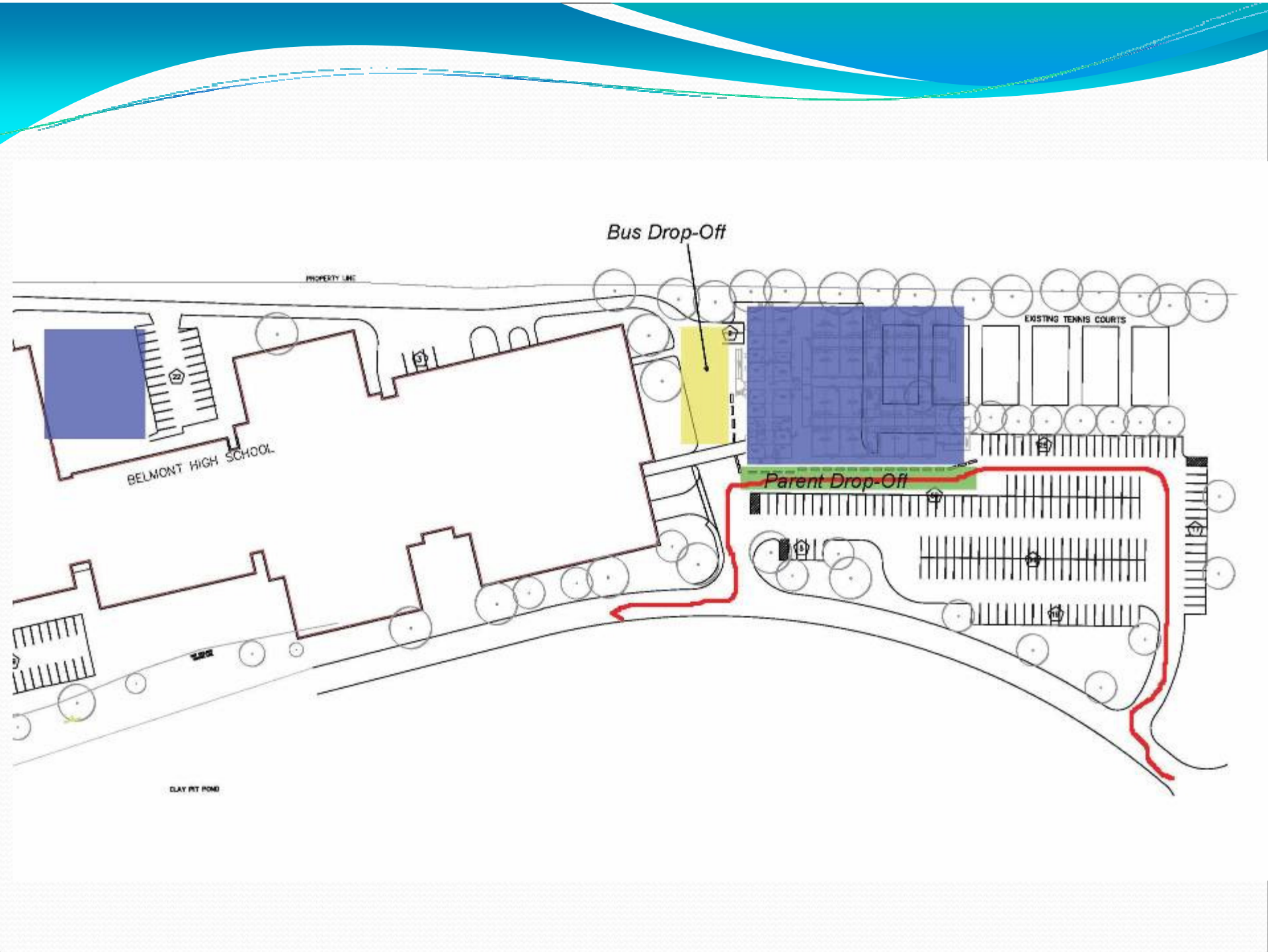


Elementary Program

- Art
- Music
- PE
- Specials
- Recess
- Lunch
- Changes in Program
- Student Care

Drop-Off Procedures

- Parking is not available. We encourage you to use the bus.
- Wellington Morning Drop Off
 - School begins at 8:40
 - Wellington Parents should follow the path (red line) drawn on the map on the next slide.
 - Student drop-off is in the area alongside the modular building (green rectangle).
 - Drop-off is “live.” Parents should not leave their vehicles.



Pick-Up Procedures

- There is no parking. We encourage you to use the bus.
- Dismissal is at 2:40.
- More specific procedures will be sent home in early February.