



BELMONT MEMORIAL LIBRARY
What's up?

Liaising with the School Committee!
(Thanks!)

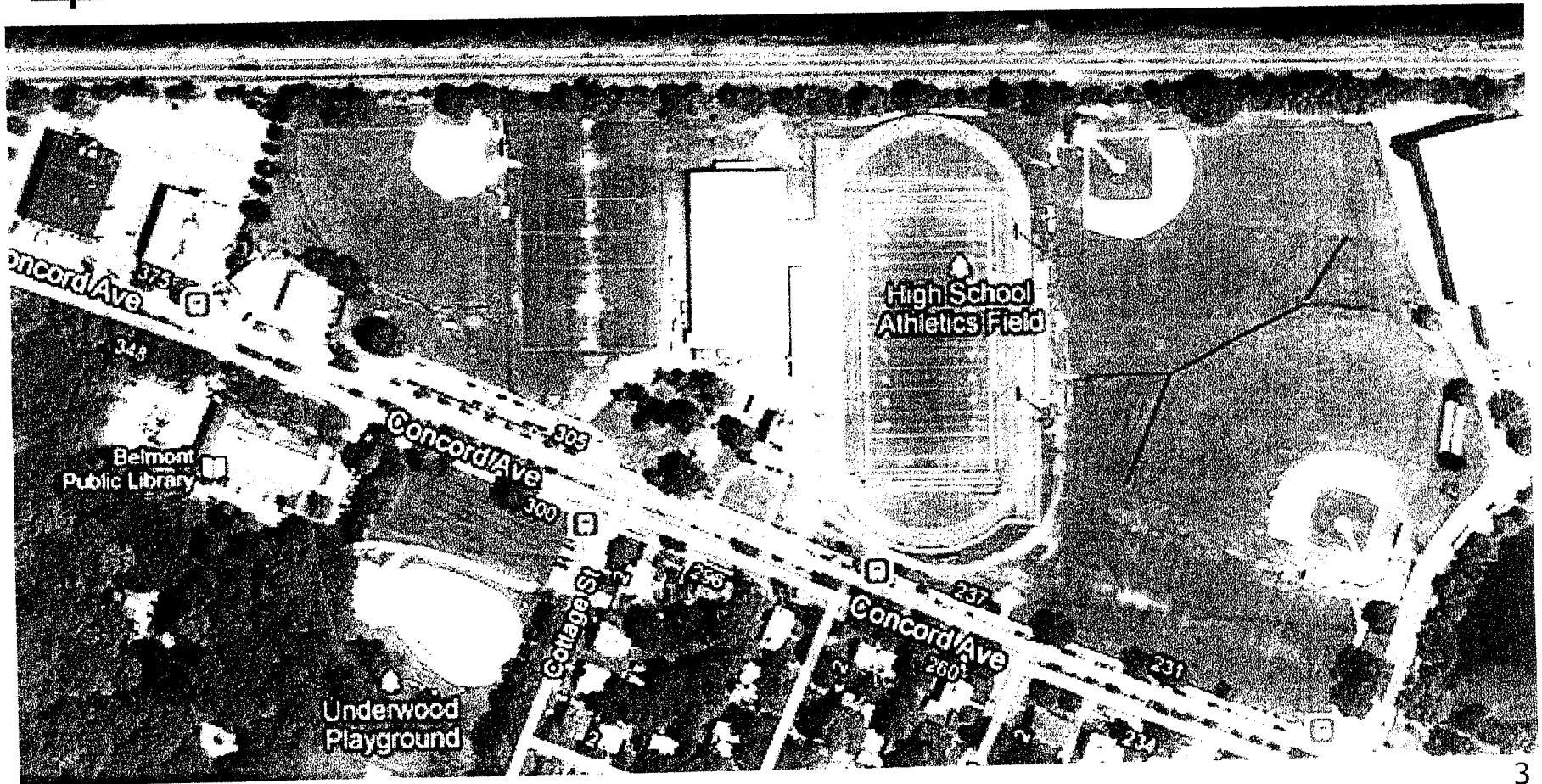
July 31, 2012 to May 7, 2013
(my, has time flown)



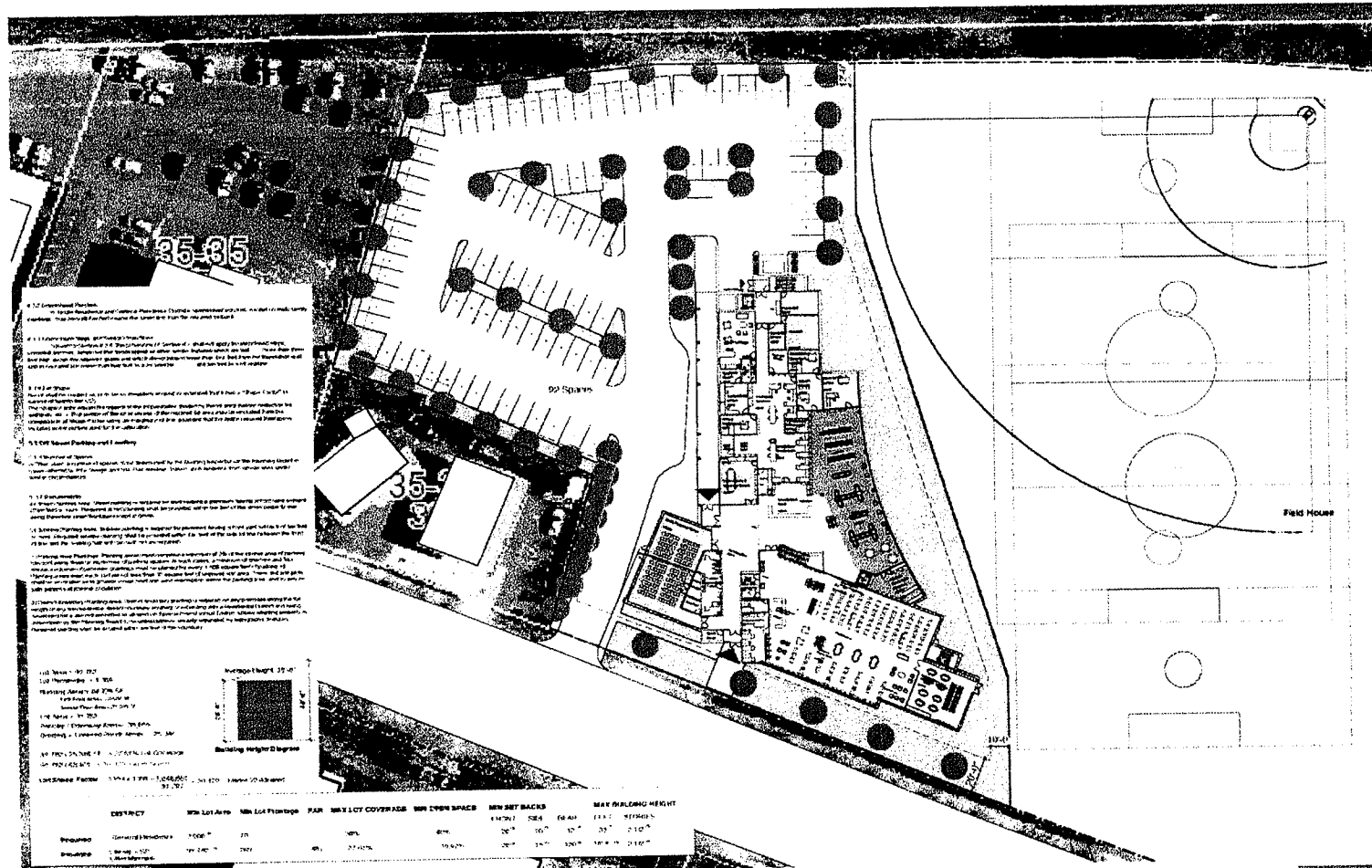
Agenda

- The issue
- How did we get here (decades in minutes)
- Options
- Evaluating options
- How do we move forward (if at all)?

Location, location, location



The issue: loss of a field



Belmont Memorial Library

Why would we do that?

- 1990s
 - A library over Leonard?...
- 2002: Cluster Committee report
 - CC says North side of Concord Ave.
- 2005: grant application → rebuild on current site
 - Why? Could not achieve consensus on land
- 2007: vote on building committee
 - Not! CPOC was formed instead of voting
 - Town gives back \$6M or so of funding



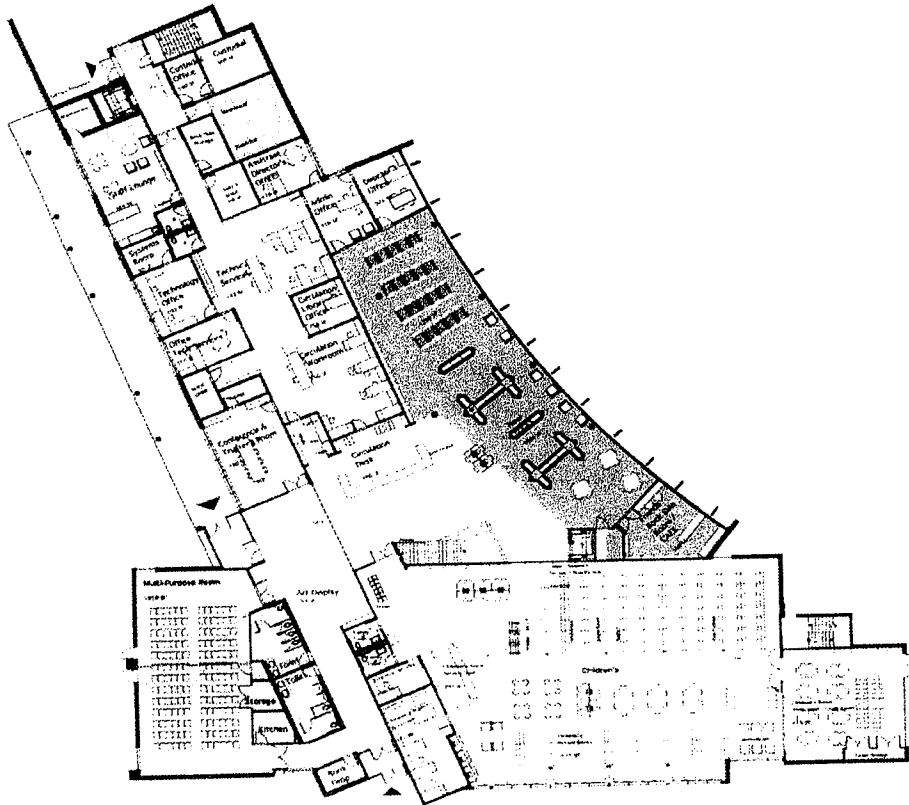
How did I get here? (cont' d)

- 2010: CPOC says North side of Concord Ave.
 - Years of work
 - All constituencies (including schools) represented
 - Part of a larger plan for the Town
- 2011: present grant application
 - BoS – unanimous support on proceeding with application at this location

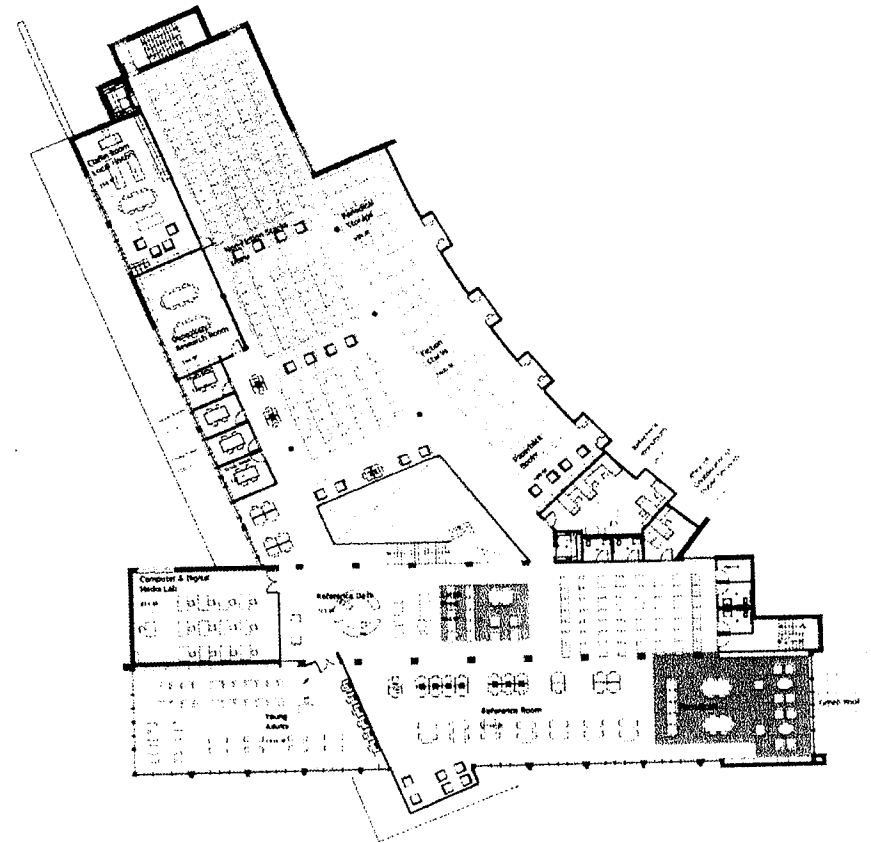
How did I get here (field edition)? (cont' d)

- BoS – unanimous commitment to solve the field issue
- C-MAG formed and meetings
- The Underwood option, summer 2012
 - Swinging for the fences
 - Hope diverted attention
 - Does show commitment to solving the problem
- Underwood option disappeared in the last couple weeks

A new library



Belmont Memorial Library
Belmont, Massachusetts
First Floor Plan



Belmont Memorial Library
Belmont, Massachusetts
Second Floor Plan



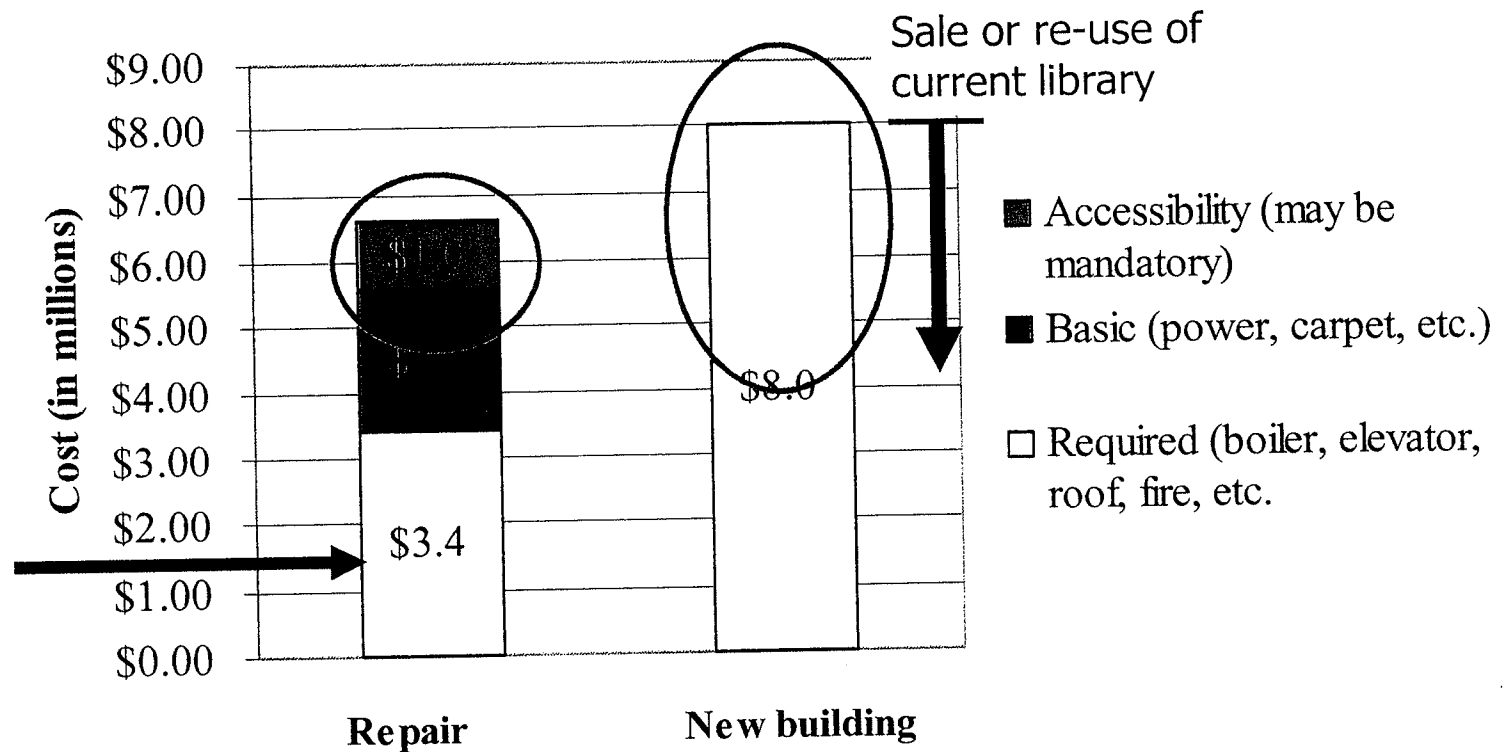


Economics

- \$18.5M – project cost
- \$7.5M – state grant
- \$2-3M – private fund-raising
- \$8-9M total project cost to Town

Cheaper to to build a new library?

AAB triggered at \$1.8M in any 3 year period.





Timing: it's now or never

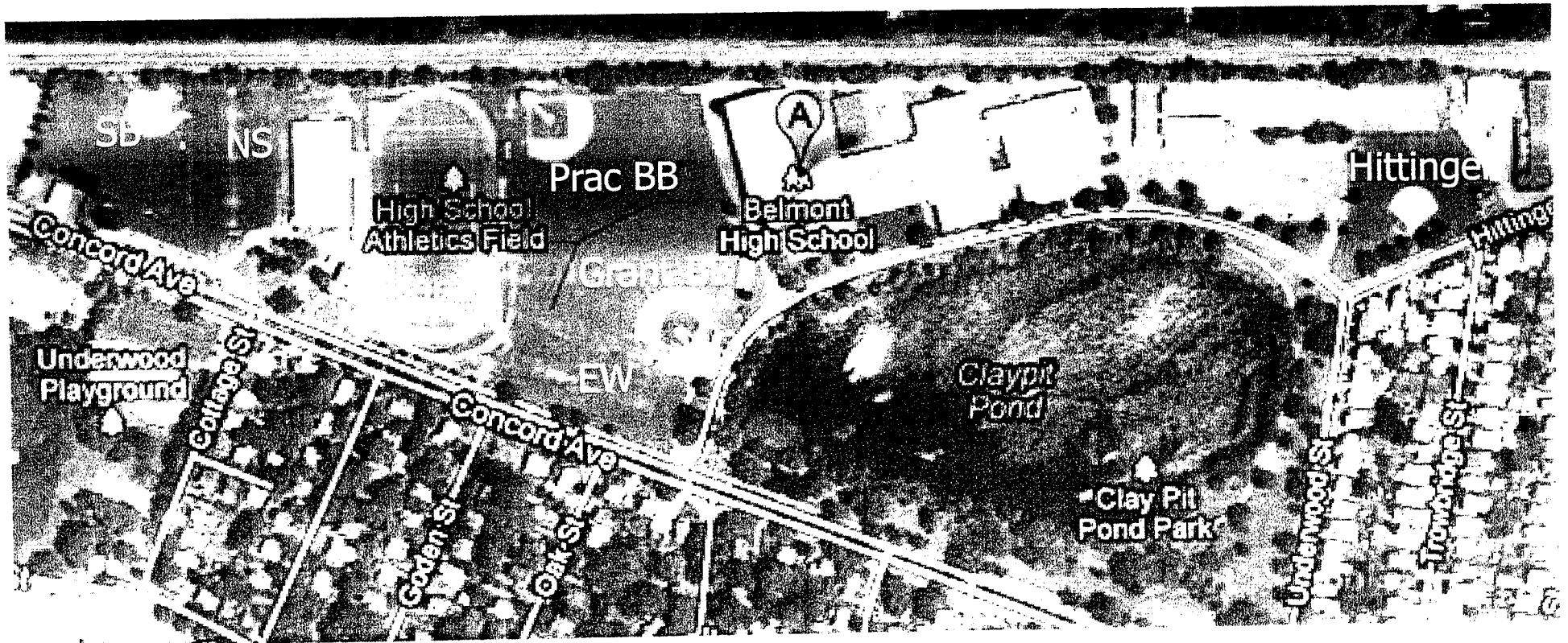
- From the MBLC:
 - Cannot re-site
 - Cannot extend (though needs explanation)
- Delay seems to mean we do not get \$7.5M of Commonwealth grant money to implement CPOC vision



Field mis-nomenclature

- HS Fields
 - Hittinger
 - Brendan Grant baseball; baseball practice
 - Astro turf (Harris)
 - Football/soccer practice (“EW practice”)
 - JV practice field (“NS practice”)
 - SB field

Field mis-nomenclature



Belmont High School Fall Sports – 2000

- **Cross Country (Girls): Varsity, J. V.**
- **Cross Country (Boys): Varsity *, J. V. ***
- **Field Hockey (Girls): Varsity *, J. V. *, Freshman**
- **Football: Varsity *, J. V. *, Freshman**
- **Golf: Varsity ***
- **Soccer (Boys): Varsity *, J. V. *, Freshman**
- **Soccer (Girls): Varsity, J. V., Freshman**
- **Swimming (Girls): Varsity**
- **Volleyball (Girls): Varsity, J. V.**

Totals: 2000 – 20 sports
1970 – 9 sports Belmont High School Fall Sports

* Indicates sports also played in 1970

Belmont High School Spring Sports 2002, I guess

- **Baseball: Varsity*, J. V.*, Freshman**
- **Tennis (Boys): Varsity*, J. V.***
- **Tennis (Girls): Varsity*, J. V.***
- **Softball: Varsity*, J. V.*, Freshman**
- **Outdoor Track (Boys): Varsity***
- **Outdoor Track (Girls): Varsity**
- **Volleyball (Boys): J. V.**
- **Lacrosse (Boys): Varsity (2002), J. V. (2001)**
- **Lacrosse (Girls): Varsity (2002), J. V. (2001)**

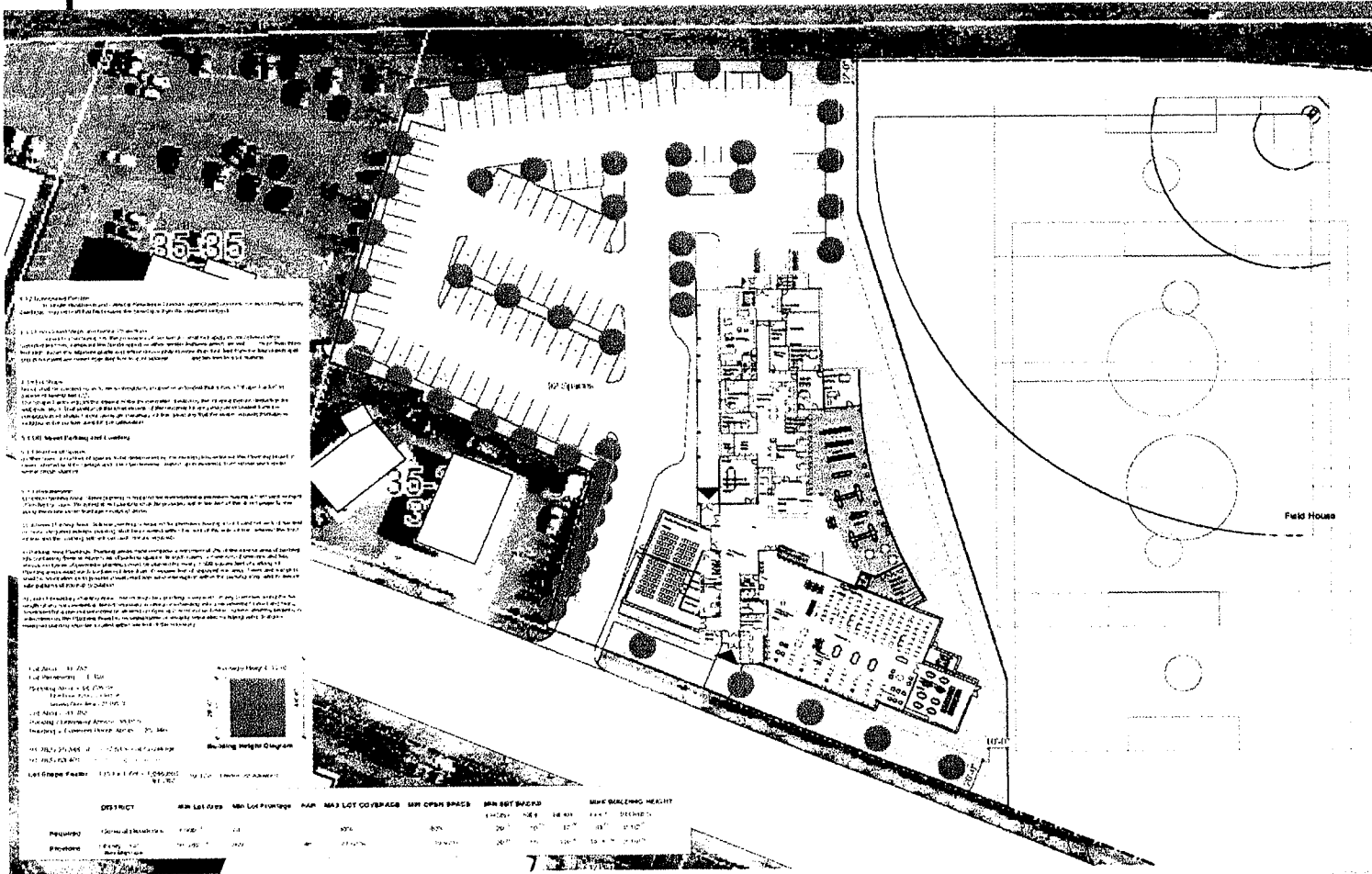
**Totals: 2000' s – 17 sports
 1970 – 9 sports**

Field misnomerclature (cont' d)



- Other fields used by HS (to varying degrees)
 - Town field (regular use)
 - Chenery SB (regular use)
 - PQ fields
 - Grove street

Looking for a practice field –



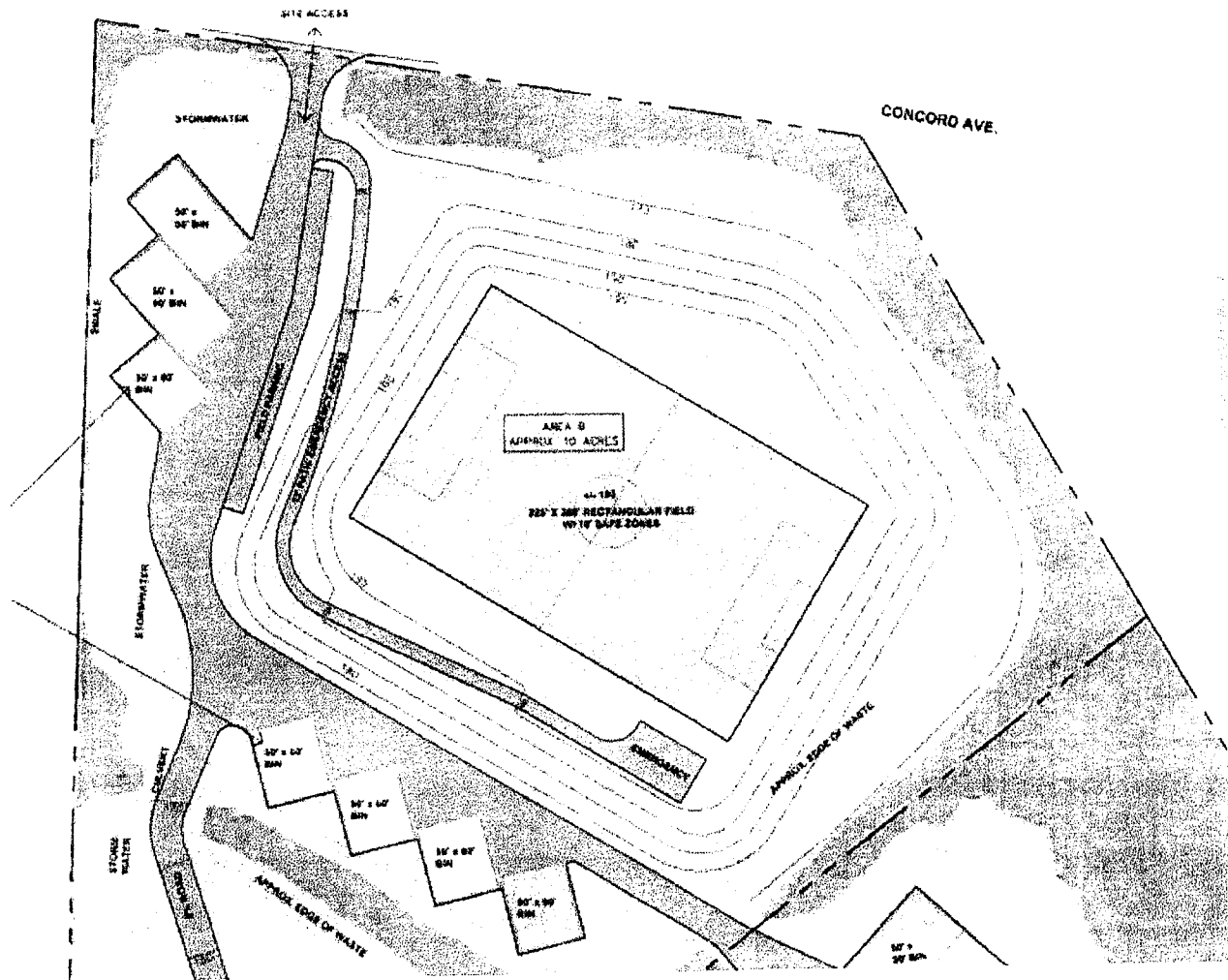
Belmont Memorial Library

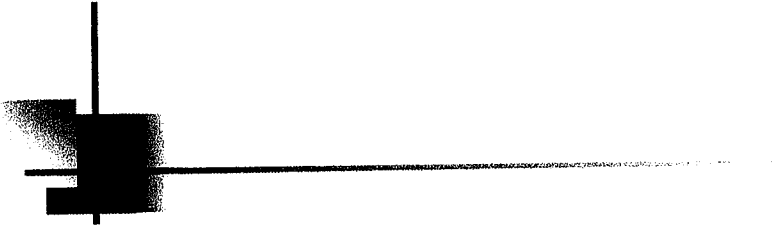


Options for fields

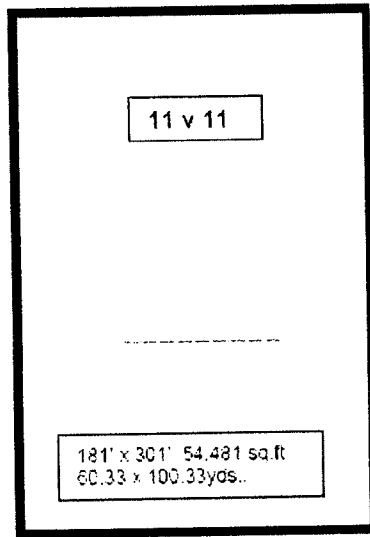
- Option 1: Field by the Meadows (or 2 if better).
- Option 2: Mega-Hittinger.
- Option 3: It really doesn't matter – we can't lose the space and the library won't go there.

Field by the Meadows – 225' x 360'



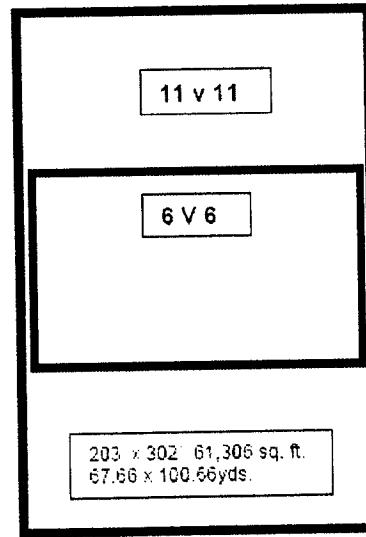


JV Field

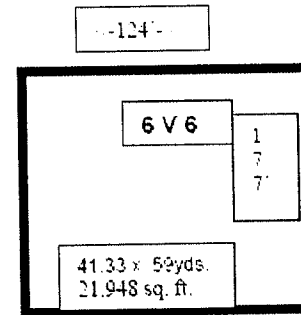


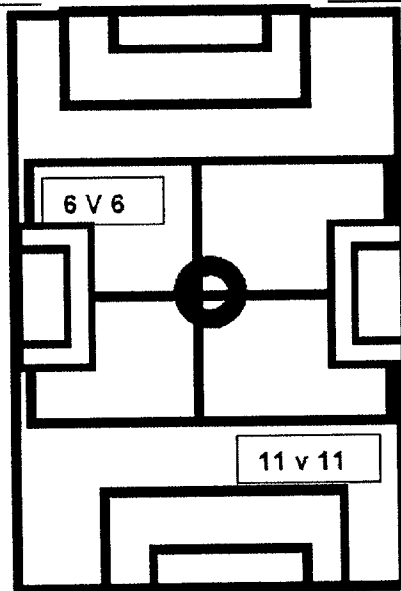
Concord Av.

PQ Field



Maple St.

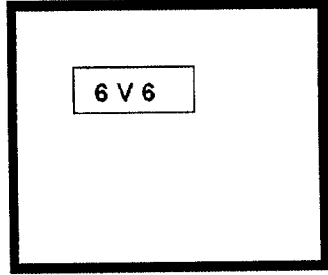
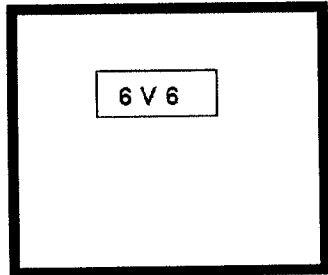




346' x 206' 63,036 sq. ft.
115.33 x 68.66 yds.

Add 120' x 206' space in back of net with mods


Winubrook Field (2) 6 v 6 approx.



Evaluating the FbyM option -- approach



- SC “concerns” at C-MAG
- The pluses and the minuses



SC concerns -- Incinerator

1. Title 9
2. Medical/trainers for home athletic events
3. Shelter for inclement weather
4. Rec. programs (though that may be a community concern, rather than school)
5. Covering recurring added costs
6. Maintenance staff access
7. Power for score boards, if appropriate
8. Reservation of rights



Additional costs

- Total projected cost per season:
\$21,450.00
 - Transportation: 55days x \$255.00 =
\$14,025.00
 - Trainer coverage: 55days X 3hours/day@
\$45.00perhour = \$7,425.00

The Field by the Meadows -- downsides



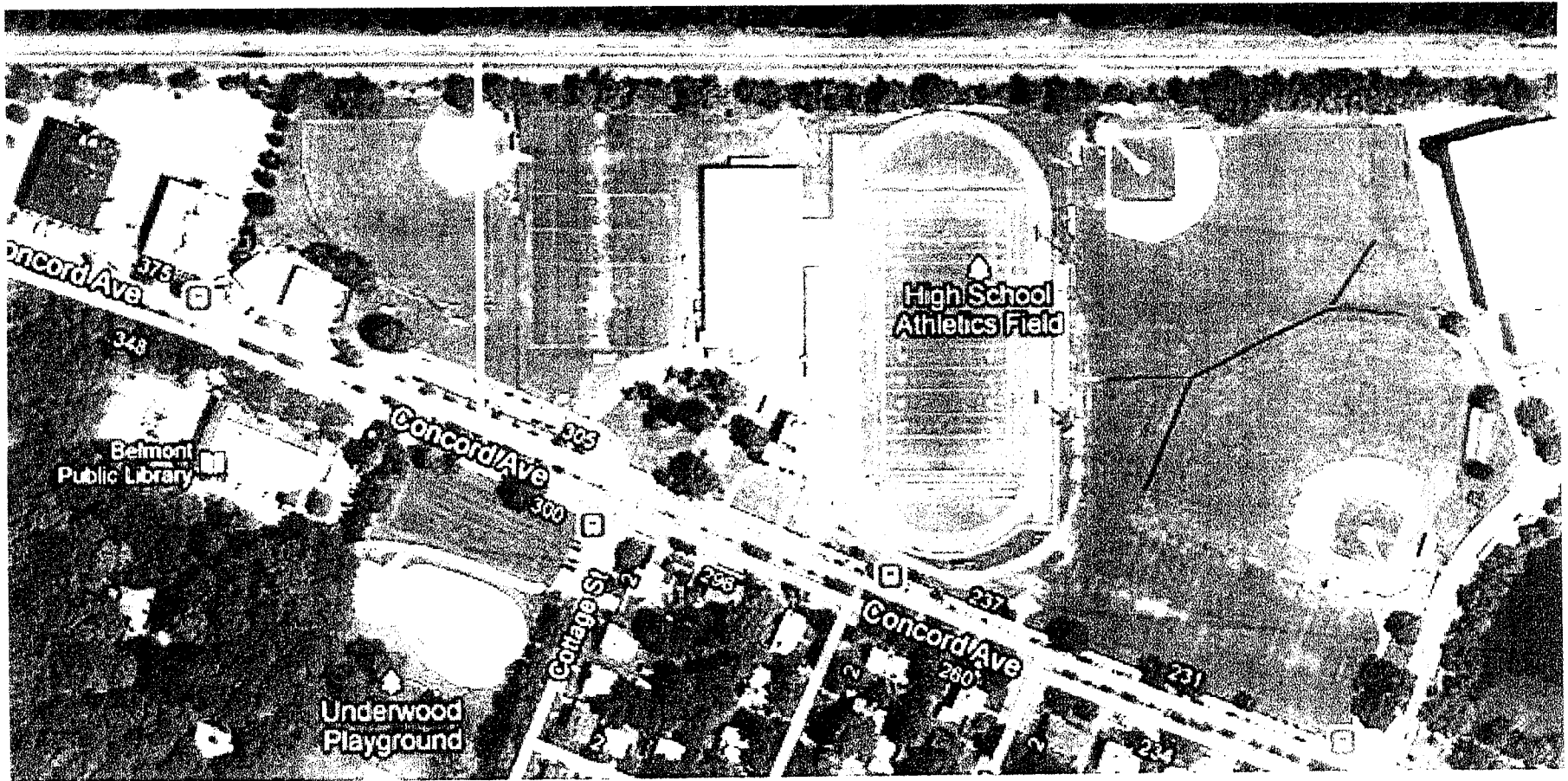
- Recurring costs
 - Would have to be covered
- Transportation/offsite-ness
 - The badness is instinctive
 - But maybe just bad, and not so bad
 - HS already has regular and irregular off-site use of fields, without transportation, shelters, etc.
 - (I am told) other Towns use off site fields

The Field by the Meadows -- upsides

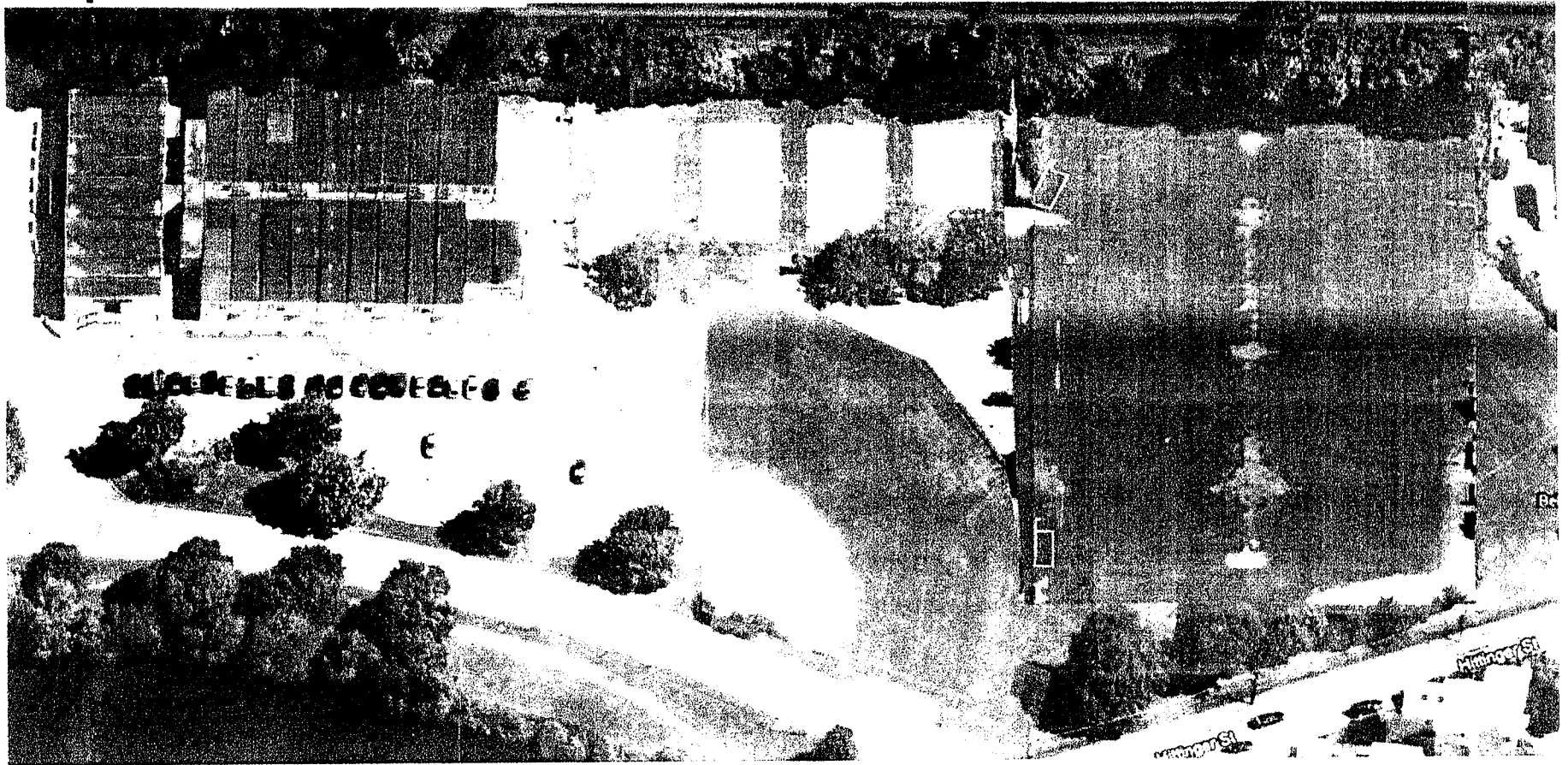


- Bigger field than currently possible
- Can be split into two smaller fields more easily
- More trainers (presumably)
- And a library
 - Design for quality tutoring space
 - Better/safer supervision
 - Computer lab with sight-lines
 - Study rooms and places

Downsides -- flexibility

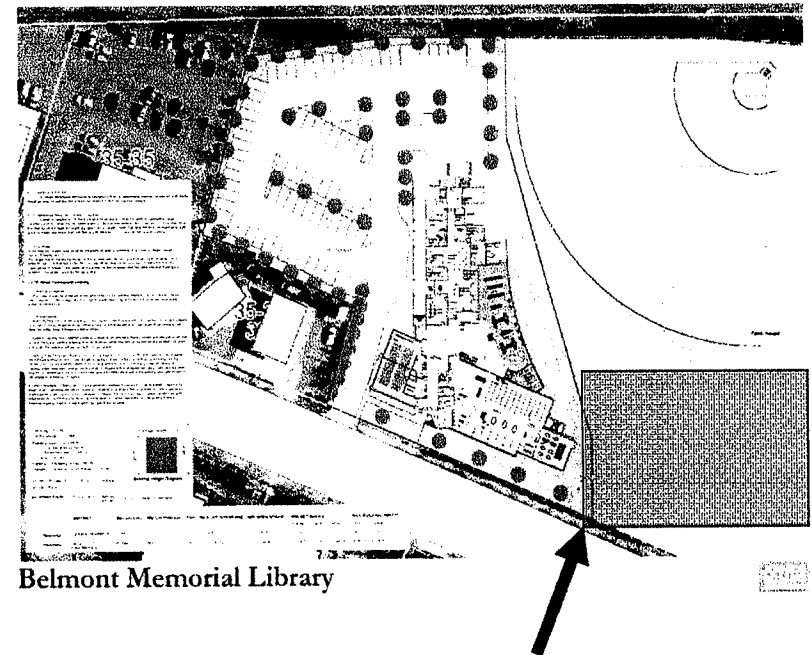


Another option – Mega-Hittinger



Mega-H impact on parking?

- How OK is it (lost space is similar to stacked modules)?
- Additional parking may be provided in other areas
- For high capacity days (e.g., plays), additional parking at library.



Belmont Memorial Library

Parking here, if preferred to extra field space



Mega-H pluses and minuses

- Pluses
 - No impact on fields (maybe even a little extra room), maintenance, travel, etc.
 - And a library!
- Minuses
 - Flexibility (that one is not solvable)
 - Parking



Options for fields

- Option 1: Field by the Meadows (or better alternative).
- Option 2: Mega-Hitter (or better alternative).
- Option 3: It really doesn't matter – The SC just can't lose the space.



Options for moving forward

- Option 3 – it just won't work. Done.
- School vote now, sufficient to give TM comfort the project will happen (e.g., contingent on field, but with the message that the SC expects to say “Yes”)
- TM vote at end of May, contingent on subsequent School Committee approval of a field plan