

New Daniel Butler Elementary School Playground  
Formal proposal to Belmont School Committee: 9/13/11

The effort to build a new community playground at the Daniel Butler Elementary School actually began many years ago, under the leadership of former Principal Bruce MacDonald and current Butler parent Coralie DiTommaso. Consultants were brought in estimated that a replacement would be needed in 5-7 years. At the time, however, it was estimated that maintenance could be done to temporarily improve the playground, which included a thorough power washing and resealing.

Four years later I arrived at Butler School and in the course of my entry interviews and stakeholder meetings it became clear that there was much support for a renewed effort to improve the playground. That year I assembled a New Playground Committee and we spent much of 2009-2010 meeting with different playground designers, consultants, and construction experts.

In 2010-2011 the Butler PTA and BEDP joined together to pay for the design services of Miller Design LLC, a local design company who also have ties to the Belmont community as parents of students at the Winn Brook School. Miller Design helped facilitate public input meetings – 5 in all – with stakeholders that included Parents, BEDP Staff, Teachers, and Neighbors. They capably walked the committee through the entire design phase. In addition to those input meetings, the New Playground Committee had online opportunities for input, parent coffees, several PTA presentations, and countless e-mail exchanges. We published all playground documents, including responses to every single question we received, online. All playground-related documents are posted on our school website at: <http://www.belmont.k12.ma.us/butler/mews/details.asp?newsid=62>

It is the committee's belief that the final design accurately reflects the wishes of the Daniel Butler School Community, including:

- *Preserving the amount of open "green" space.* The final design represents a smaller footprint than the current playground.
- *Incorporating "green" aspects.* These include outdoor classroom spaces, natural play areas, energy-generating equipment, and equipment from environmentally-conscious companies.
- *Changing the surfacing.* Options include solid turf or rubber instead of the current loose gravel surface.
- *Keeping fundraising expectations minimal.* We are not expecting the town to pay for a new Butler playground, since most of the town's residents will never use it. It is our expectation that it will be privately funded and none of the money will come from town tax revenue. In fact, it is our expectation that *most* of the money will not even come from Butler families. The fundraising group, lead by Jane Fox, is planning on a multi-tiered fundraising strategy including businesses, foundation grants and scholarships, and individual contributions. The PTA can contribute to the project as they deem acceptable, but they are not required to. No bottom line amount has been specified to date, but we are actively searching for

# { BUTLER SCHOOL }

Belmont, MA



Ultiplay Parks & Playgrounds, Inc.  
PO Box 374  
Uxbridge, MA 01569  
Phone: 508-634-1497  
Toll Free: 888-575-PLAY

111095A.DLT

# { BUTLER SCHOOL }

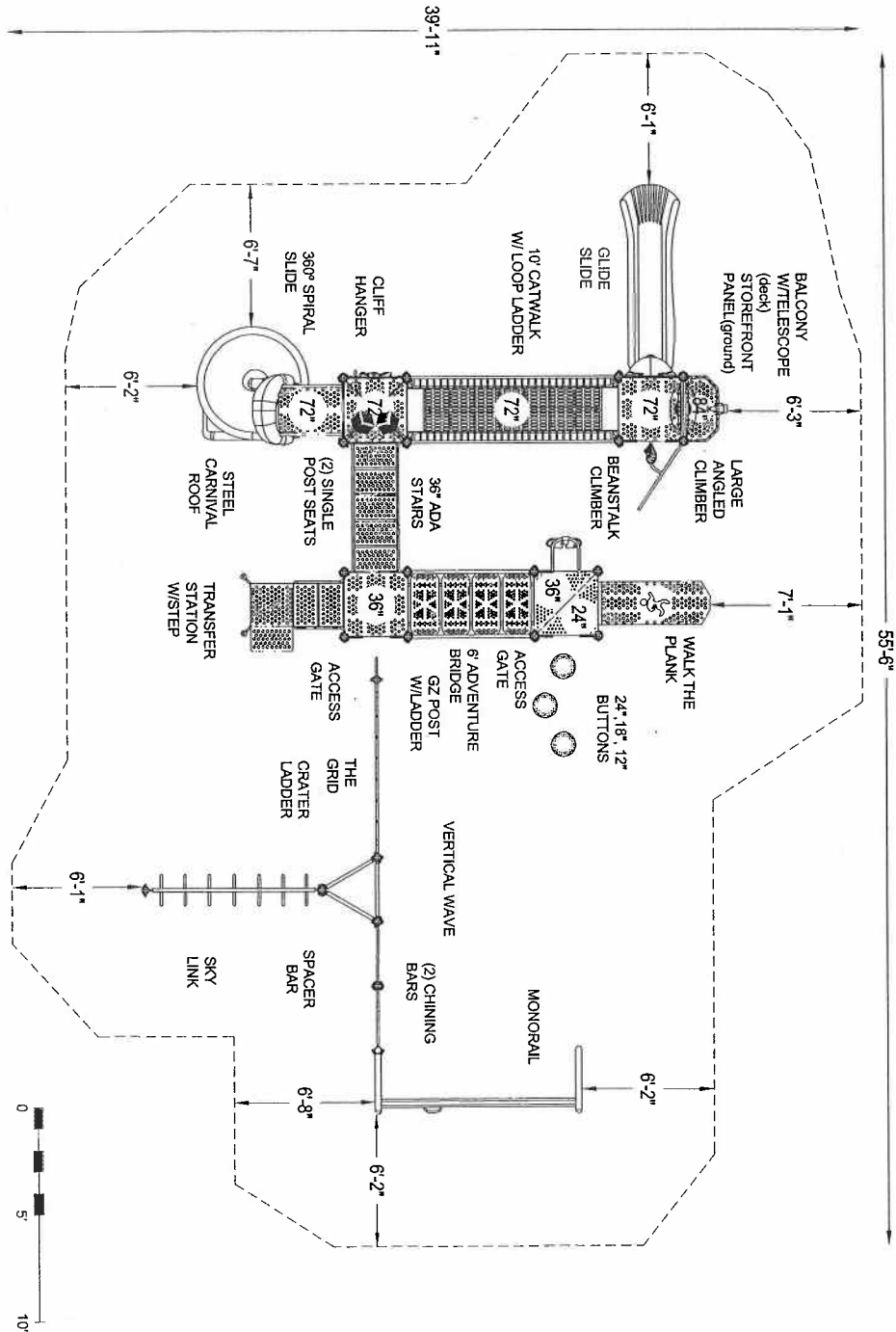
Belmont, MA



Ultiplay Parks & Playgrounds, Inc.  
PO Box 374  
Uxbridge, MA 01569  
Phone: 508-634-1497  
Toll Free: 866-575-PLAY

111095A.U.T

Playground Supervision Required



PROJECT NO: 111095.ULT	REV: A	DATE: 30-MAR-11
SYSTEM: CHALLENGERS	SCALE: 3/16" = 1'-0"	DRAWN BY: CARL OBERDORF
SITE PLAN		

ULTIPLAY PARK & PLAYGROUNDS, INC.  
P.O. Box 374  
Uxbridge, MA 01569  
866-575-PLAY

**PLAYWORLD**™

© 2011 Playworld Systems, Inc.  
Playworld® is a brand of Playworld Systems, Inc.

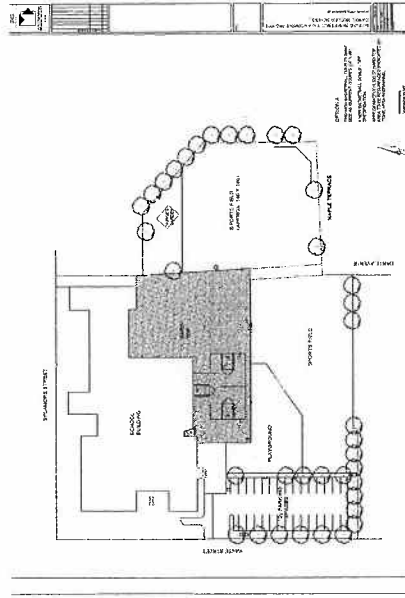


**BUTLER SCHOOL**

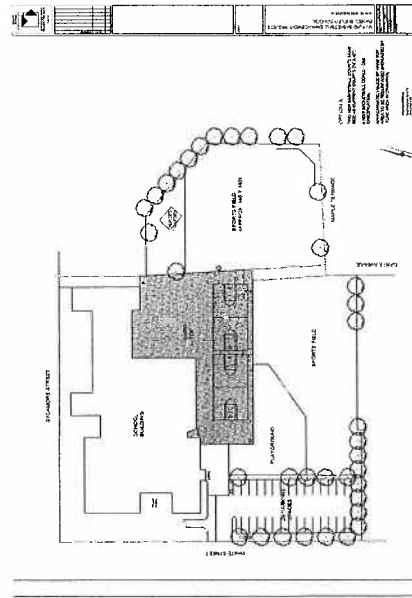
BELMONT, MA

# COURAGEOUS COURT

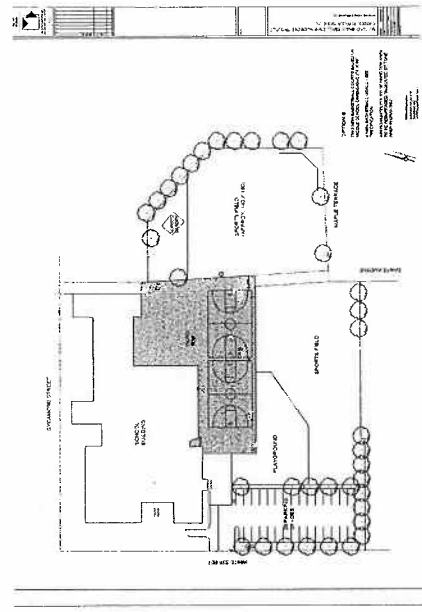
## PROPOSAL



## CURRENT



## ALTERNATIVE



# DANIEL BUTLER SCHOOL 90 WHITE STREET BELMONT MA PLAYGROUND RENOVATION

## PROJECT PHASES:

PHASE ONE: RASD SCOPE INCLUDING RESURFACING HARD TOP, NEW BASKETBALL HOOPS, MURAL.

PHASE TWO: REMOVE EXISTING CLIMBING STRUCTURES, BUT KEEP EXISTING SWINGS. INSTALL NEW CLIMBER WITH TURF FALL ZONE, TREE STUMP EDGING AND TWO LANDSCAPE AREAS.

PHASE THREE: INSTALL ENERGY-GENERATING MERRY-GO-ROUND, ENERGY-GENERATING CLIMBER WITH TUNNEL, TWO SHADE TREES AND DECK.

PHASE FOUR: REMOVE EXISTING SWINGS. INSTALL NEW SWINGS WITH RUBBER FALL ZONE.

## ENVIRONMENTALLY FRIENDLY FEATURES:

Energy generating merry-go-round to power three computers in school library

Solar powered site lighting

Reuse of existing features where possible (benches, granite blocks, etc.)

New trees and other native plant materials

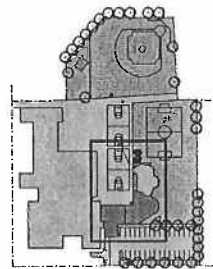
Organic mulch

Composite decking

Artificial turf and rubber fall zone surfacing both made from recycled content

Playground equipment manufactured by PSI, a "green" company. PSI is a leader in the industry for its Green Action Plan including manufacturing a low carbon footprint, eliminating PVCs, utilizing recycled materials, and reducing, reusing and recycling their manufacturing waste. For more information, visit [www.psiplaygroundequipment.com/green\\_action](http://www.psiplaygroundequipment.com/green_action)

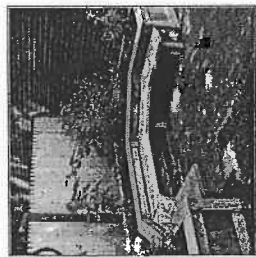
## SITE MAP:



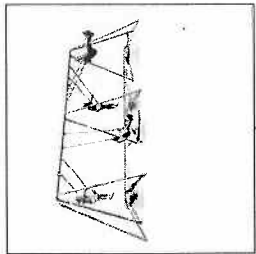
SCHEMATIC DESIGN PROVIDED BY  
MILLER DESIGN LLC, BELMONT, MA

APRIL 2011

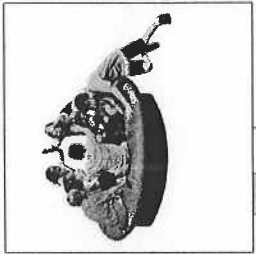
BENCHES WITH INTEGRAL PLANTERS



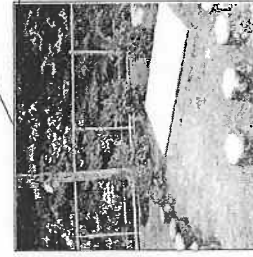
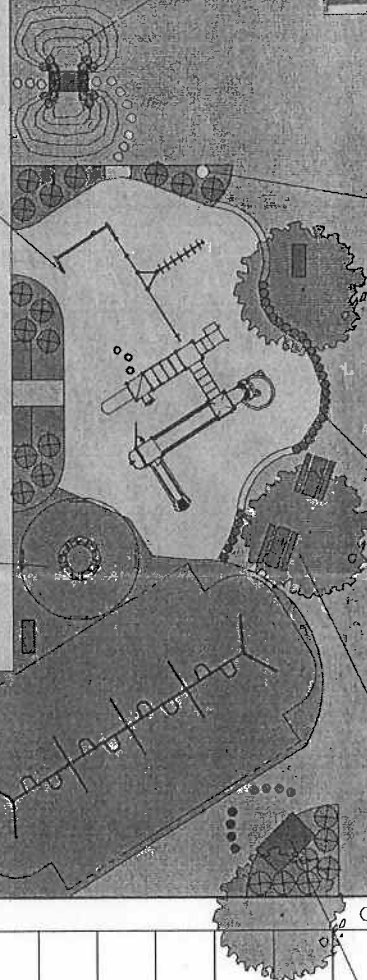
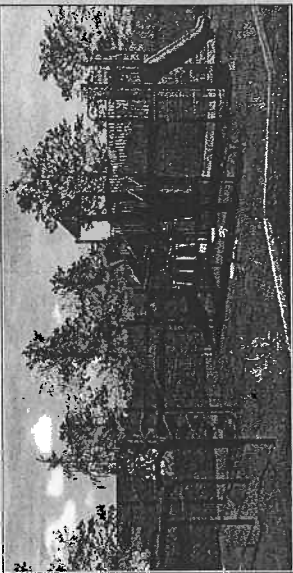
8 SWINGS BY PSI WITH RUBBER SURFACING



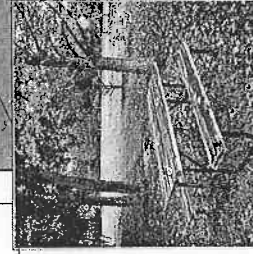
ENERGY GENERATING MERRY-GO-ROUND WITH RUBBER SURFACING



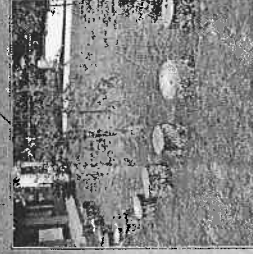
CLIMBER STRUCTURE BY PSI WITH TURF SURFACE



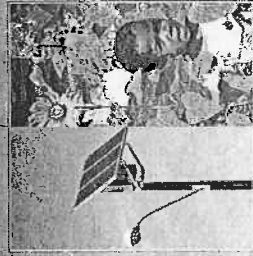
5'X6' DECK WITH TREE STUMP SEATS AND LANDSCAPING



SHADE TREES WITH PICNIC TABLES AND BENCHES



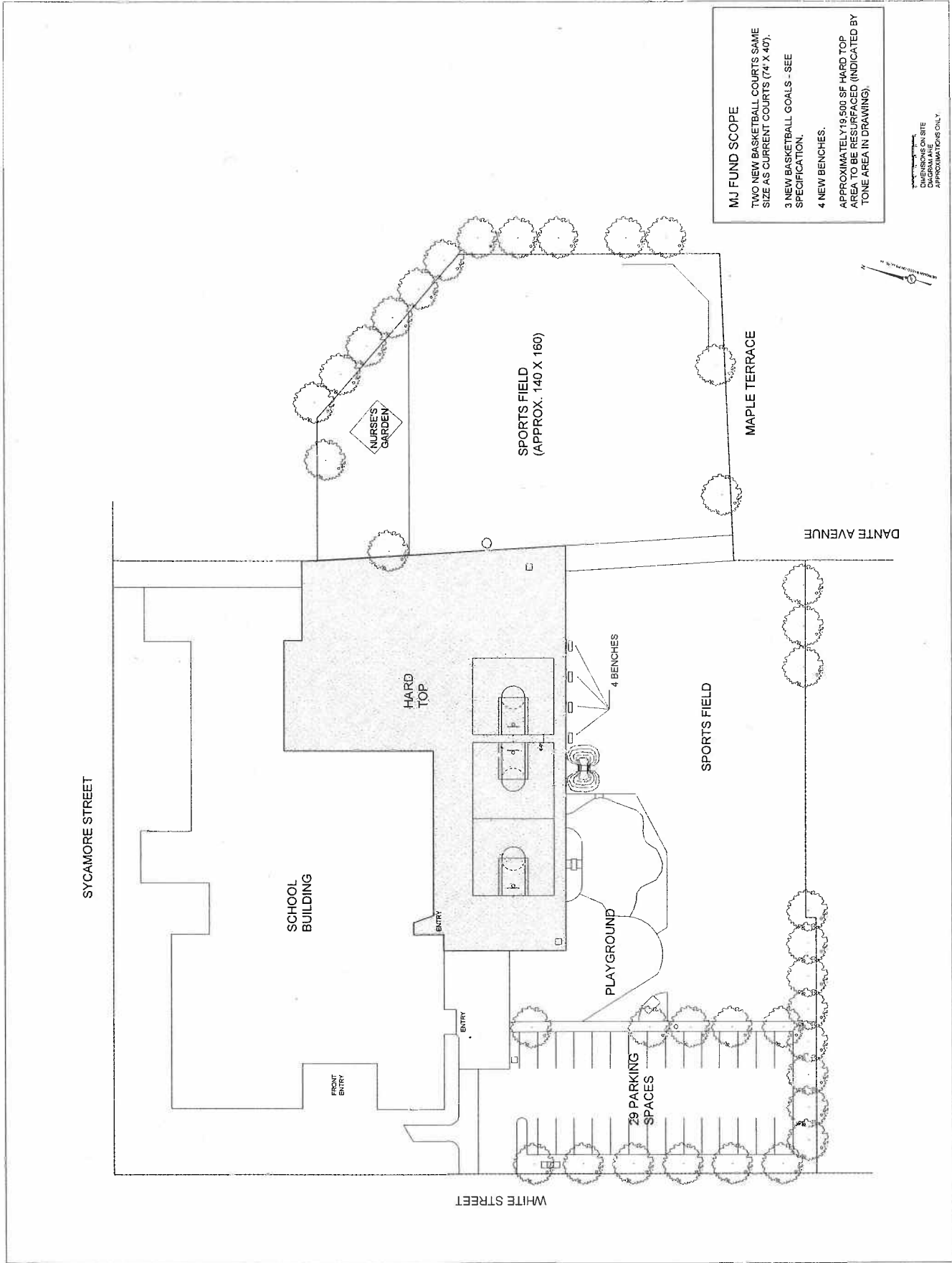
TREE STUMPS AND PAVERS AT TRANSIT ON BETWEEN TURF AND PLAYING FIELD



LANDSCAPING AREAS AND SOLAR POWERED SITE LIGHTING



GRASSY BERM WITH UNDERGROUND TUNNEL AND STEPPING STONES



ALL DIMENSIONS ON SITE  
 DIAGRAM ARE  
 APPROXIMATIONS ONLY.